

State of the State Survey Spring 2011

**MOOD TURNS SOUR ON
ECONOMY/LEADERSHIP**

State of the State Survey

Spring 2011

Charles L. Ballard

Professor, Department of Economics
Director, State of the State Survey

Institute for Public Policy and Social Research
ballard@msu.edu
517-353-2961

About SOSS Wave 59

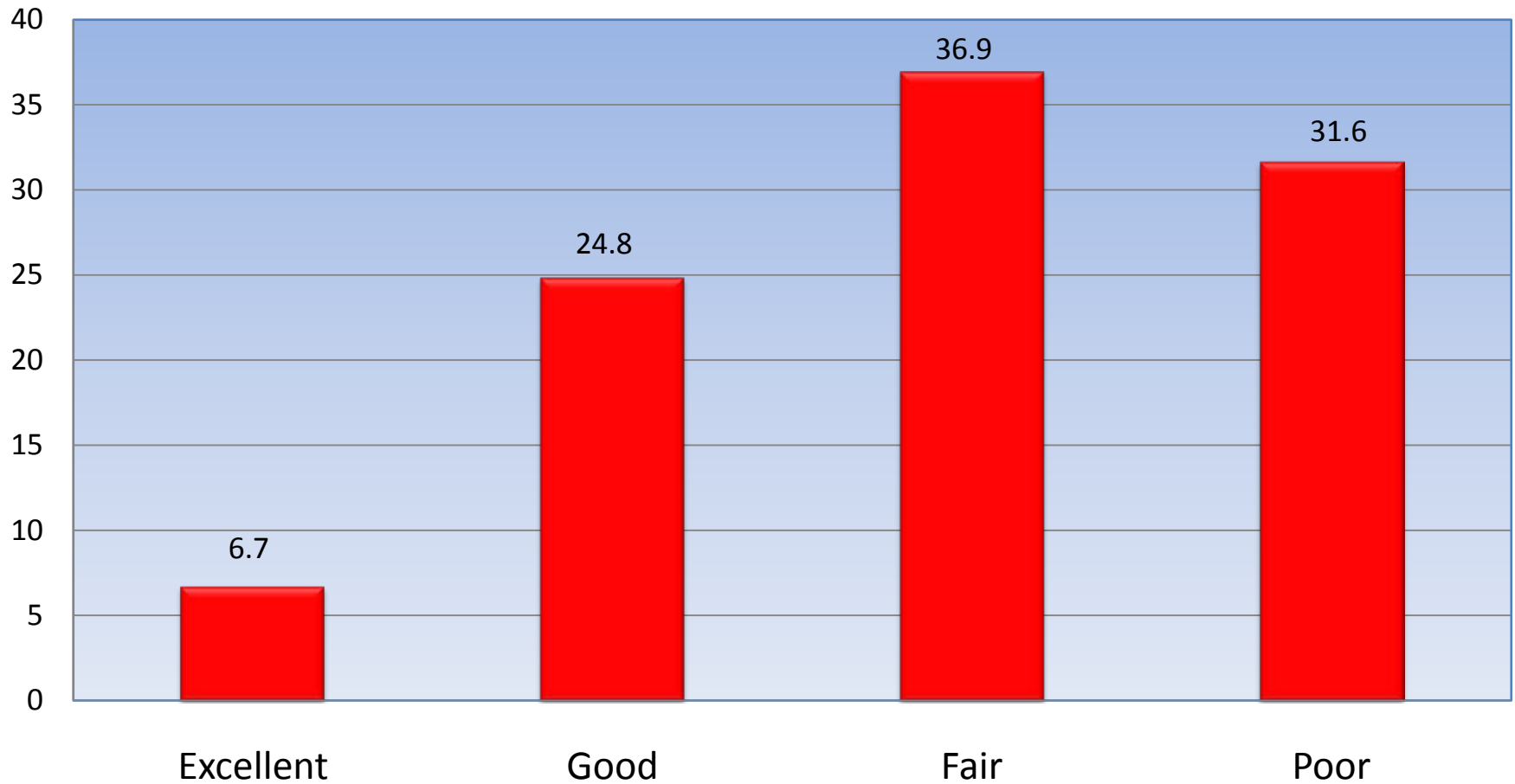
947 Interviews Completed

May 13, 2011 to July 7, 2011

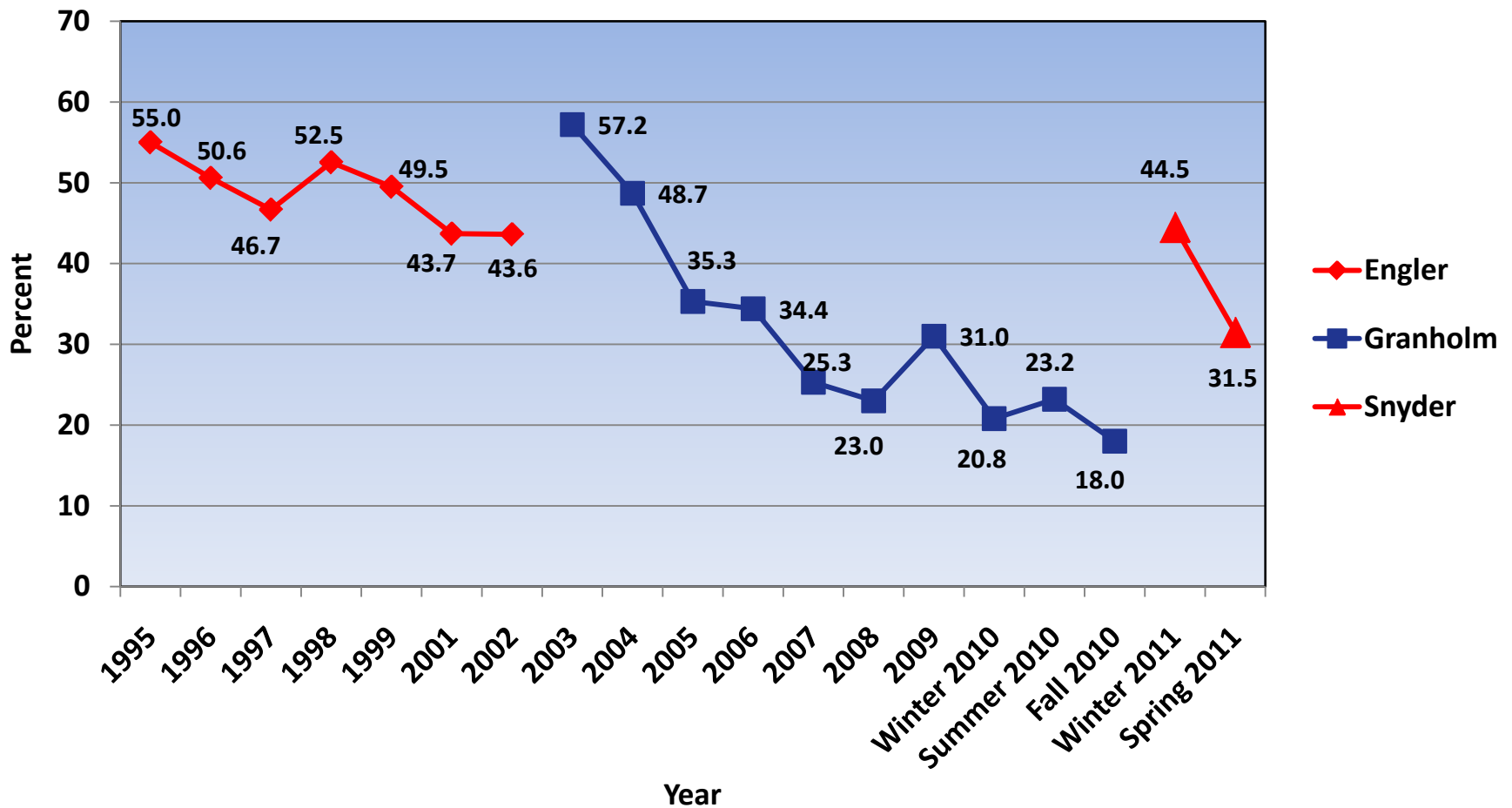
Margin of Error: $\pm 3.2\%$

**In the second survey of the
Snyder Administration,
Governor Snyder's approval
ratings dropped significantly.**

Michigan Residents' Ratings of Governor Snyder's Performance, Spring 2011

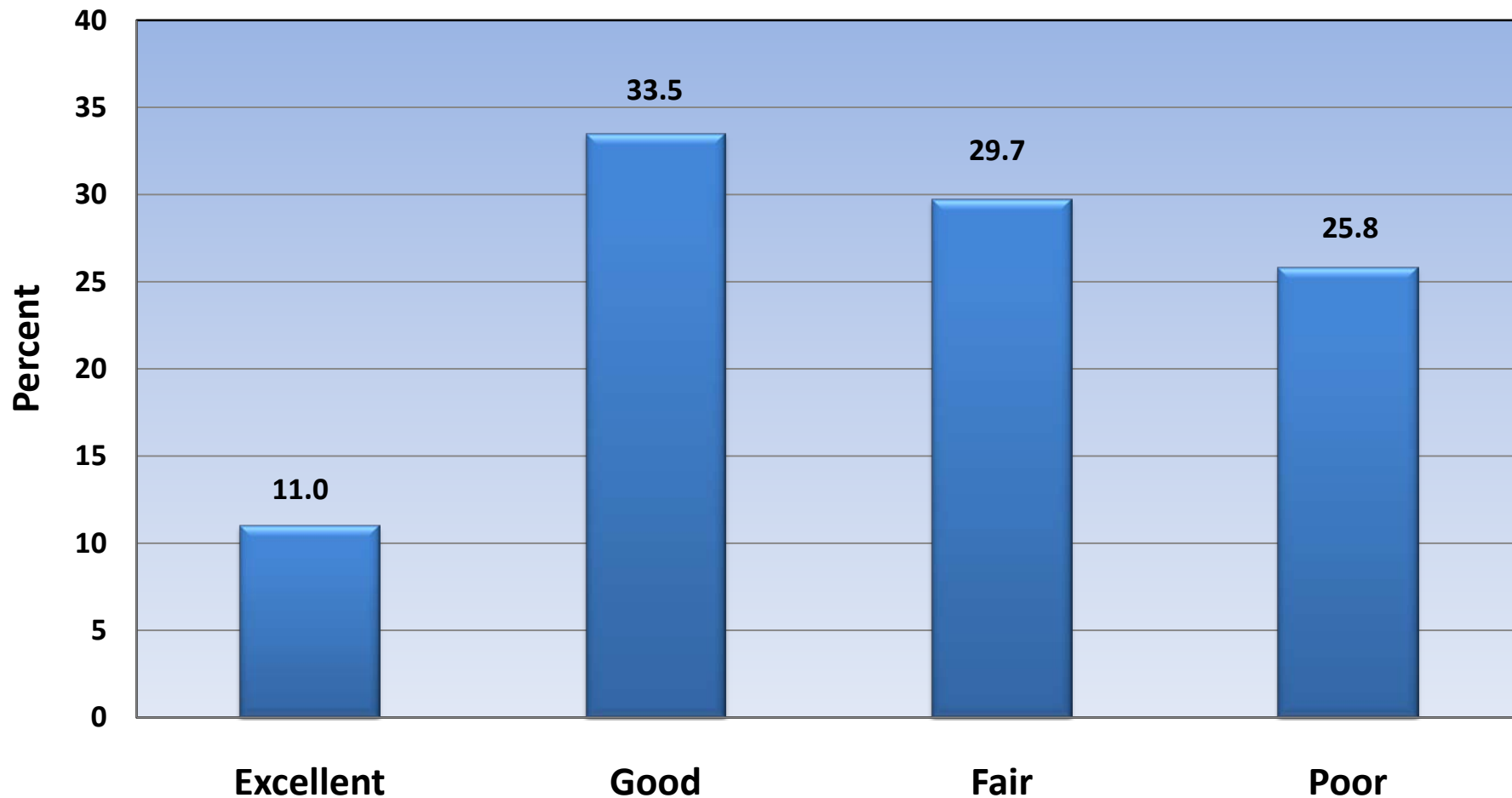


Percentage of Michigan Residents Rating Performance of Governors as "Excellent" or "Good," 1995-2011

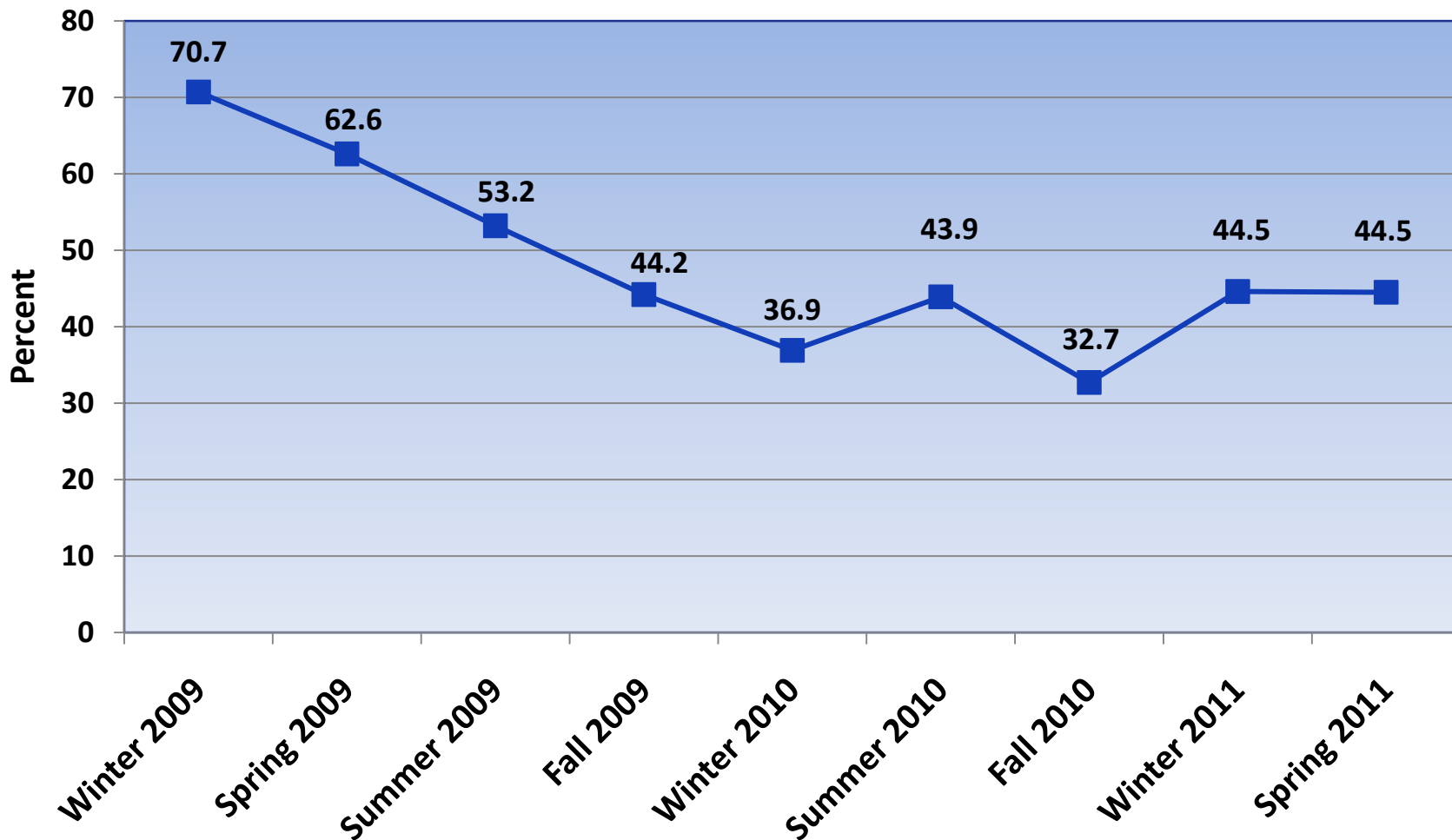


**After falling steadily in his
first year in office,
President Obama's ratings
have stabilized.**

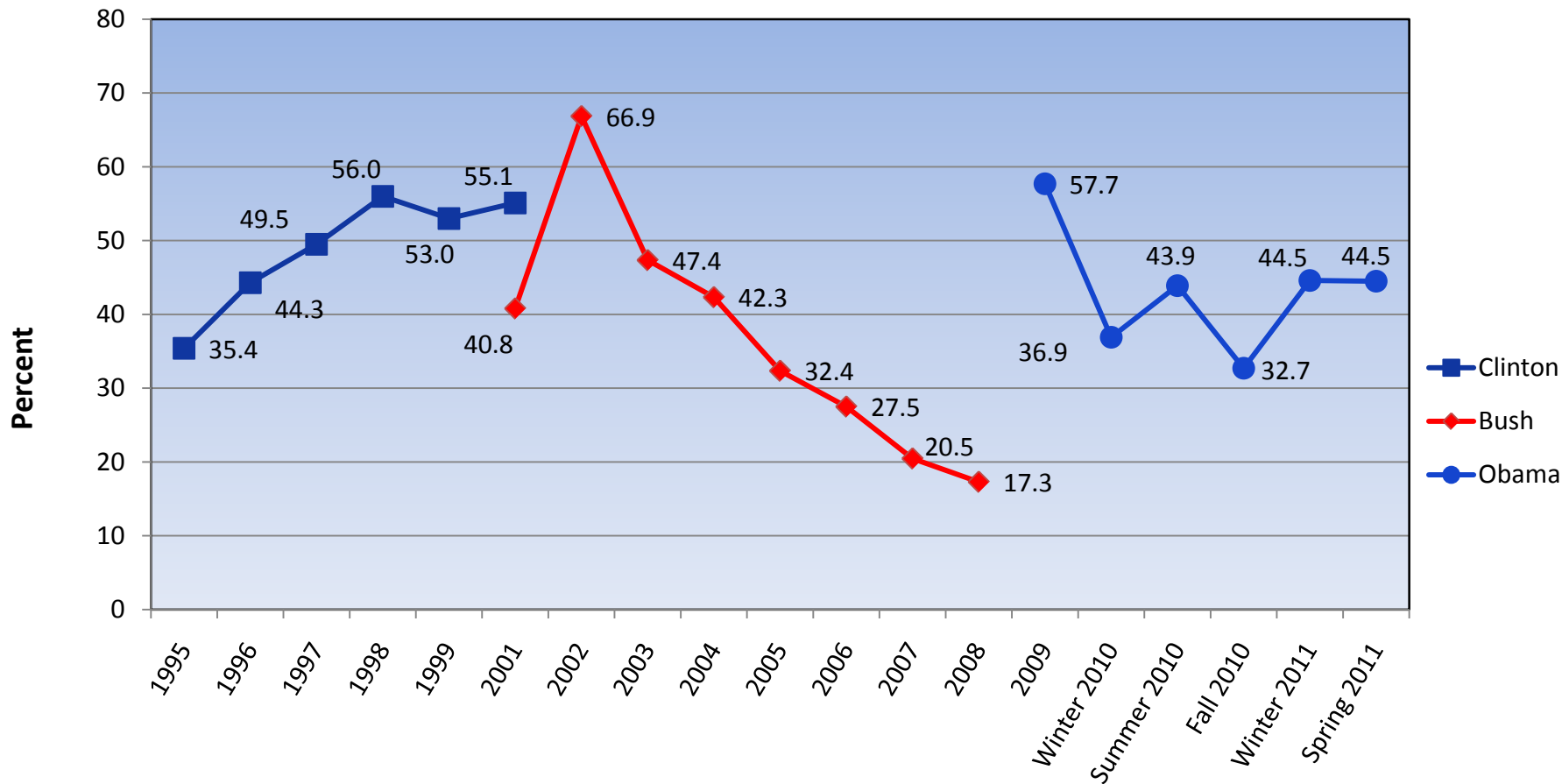
Michigan Residents' Ratings of President Obama's Performance, Spring 2011



Percentage of Michigan Residents Rating President Obama's Performance as "Excellent" or "Good," 2009-2011



**Percentage of Michigan Residents Rating
 U.S. President's Performance as
 "Excellent" or "Good," 1995-2011**

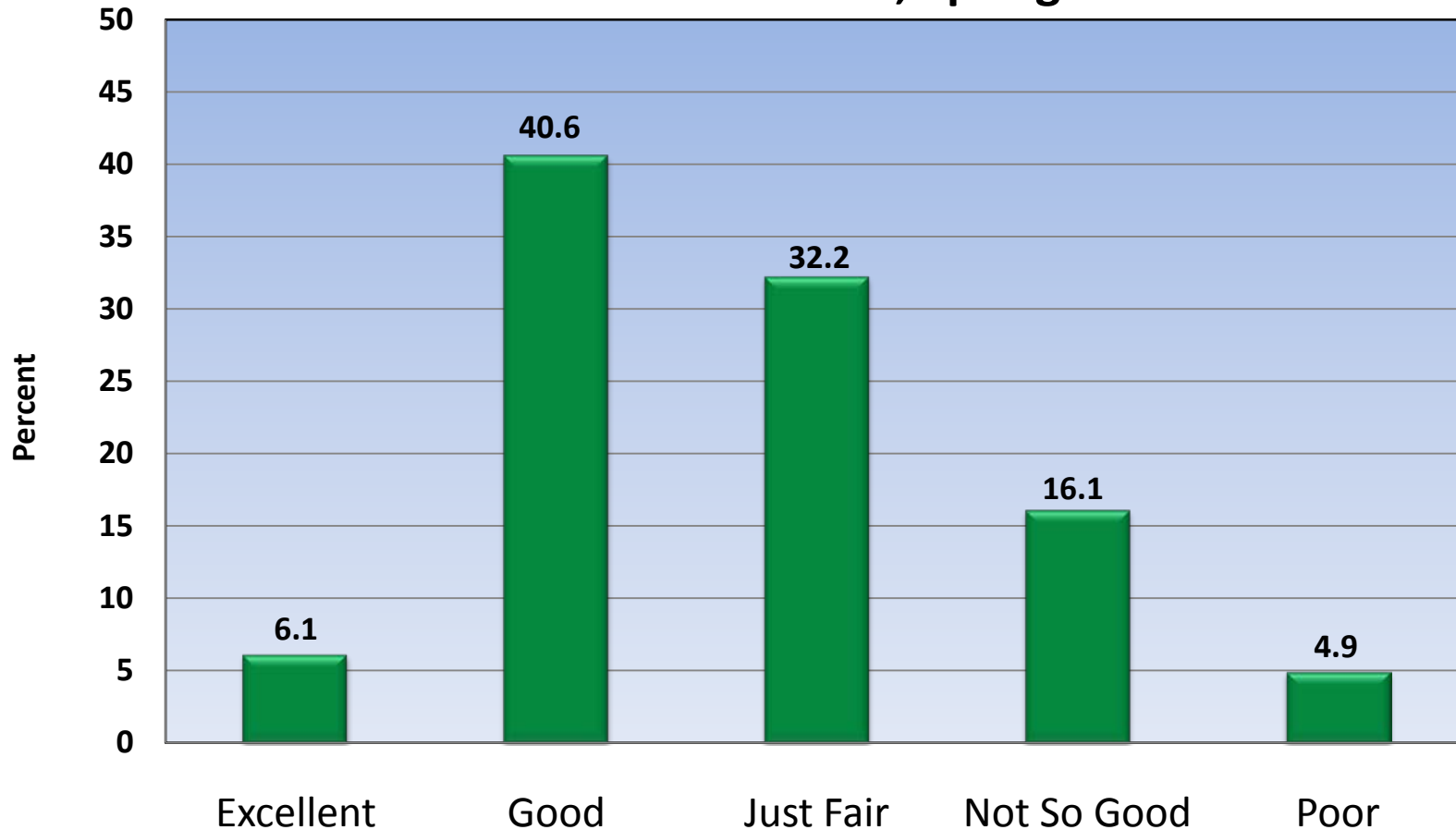


**After a long period of
improvement, consumer
confidence shows a
significant downturn**

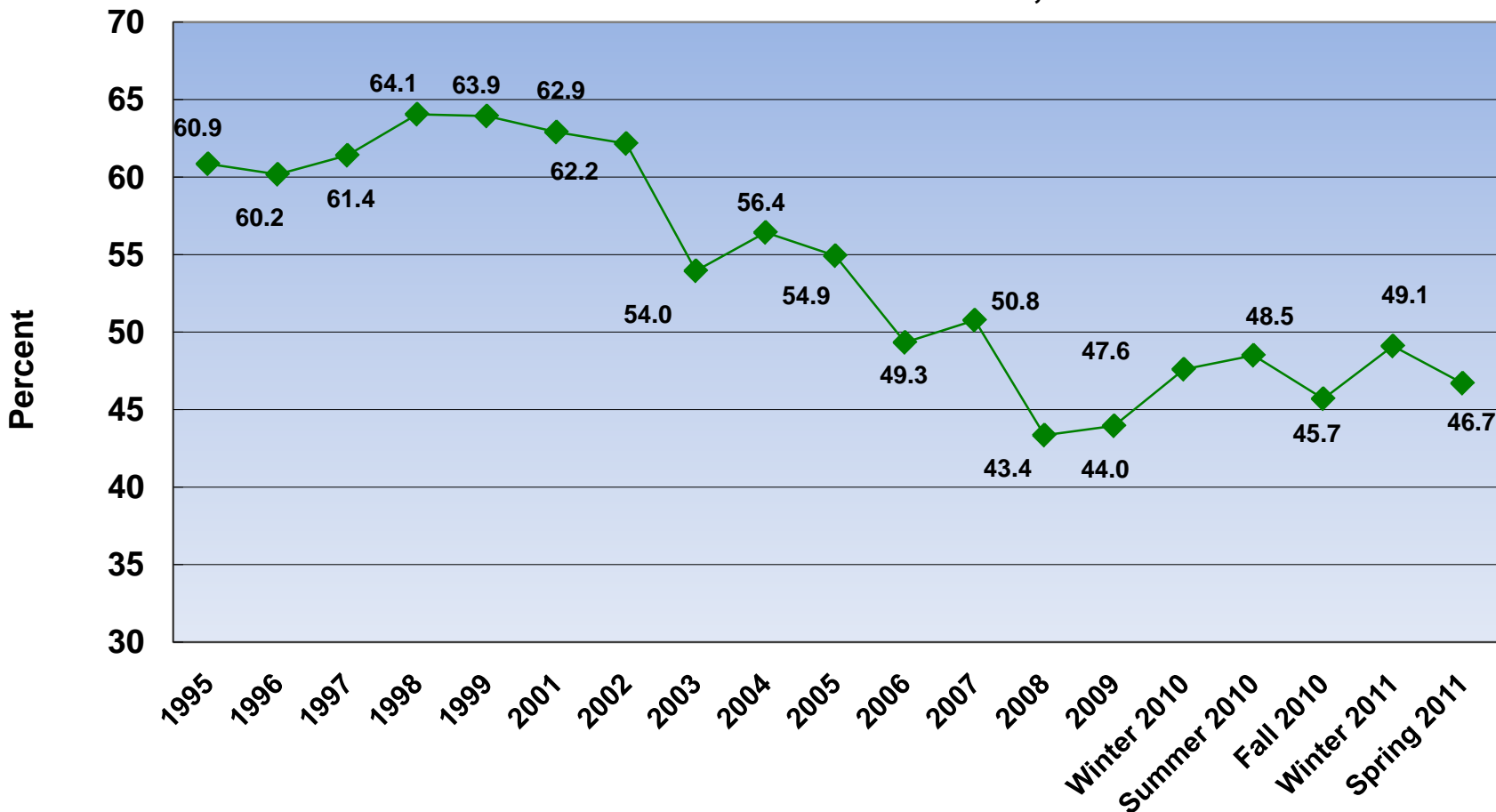
In Winter 2011, assessments of the current financial situation were at their highest level since 2007.

But they fell back a bit in Spring 2011.

Michigan Residents' Assessments of Their Current Financial Situation, Spring 2011



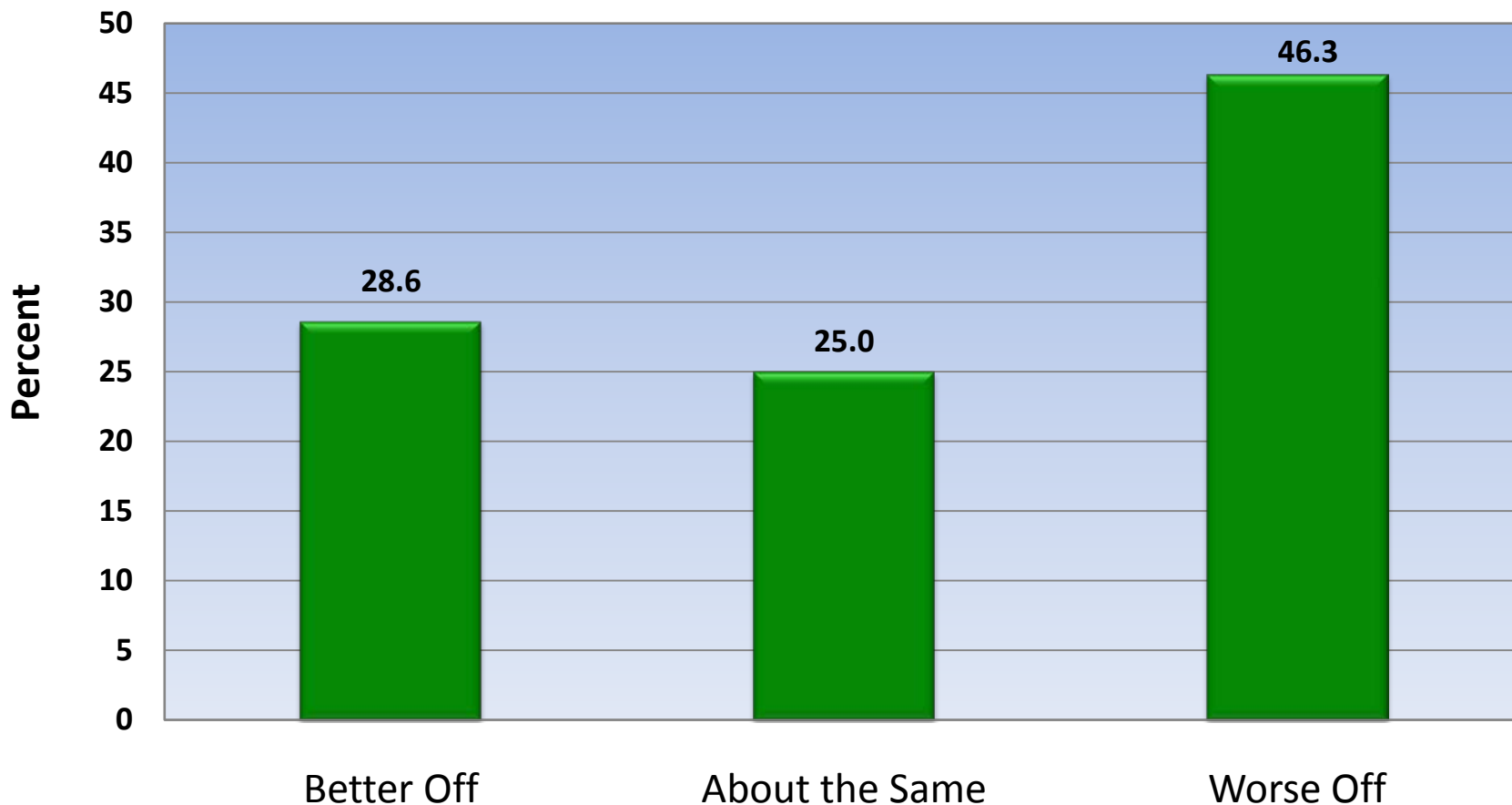
Percent of Michigan Residents Who Rate Their Current Financial Situation As "Excellent" or "Good," 1995-2011



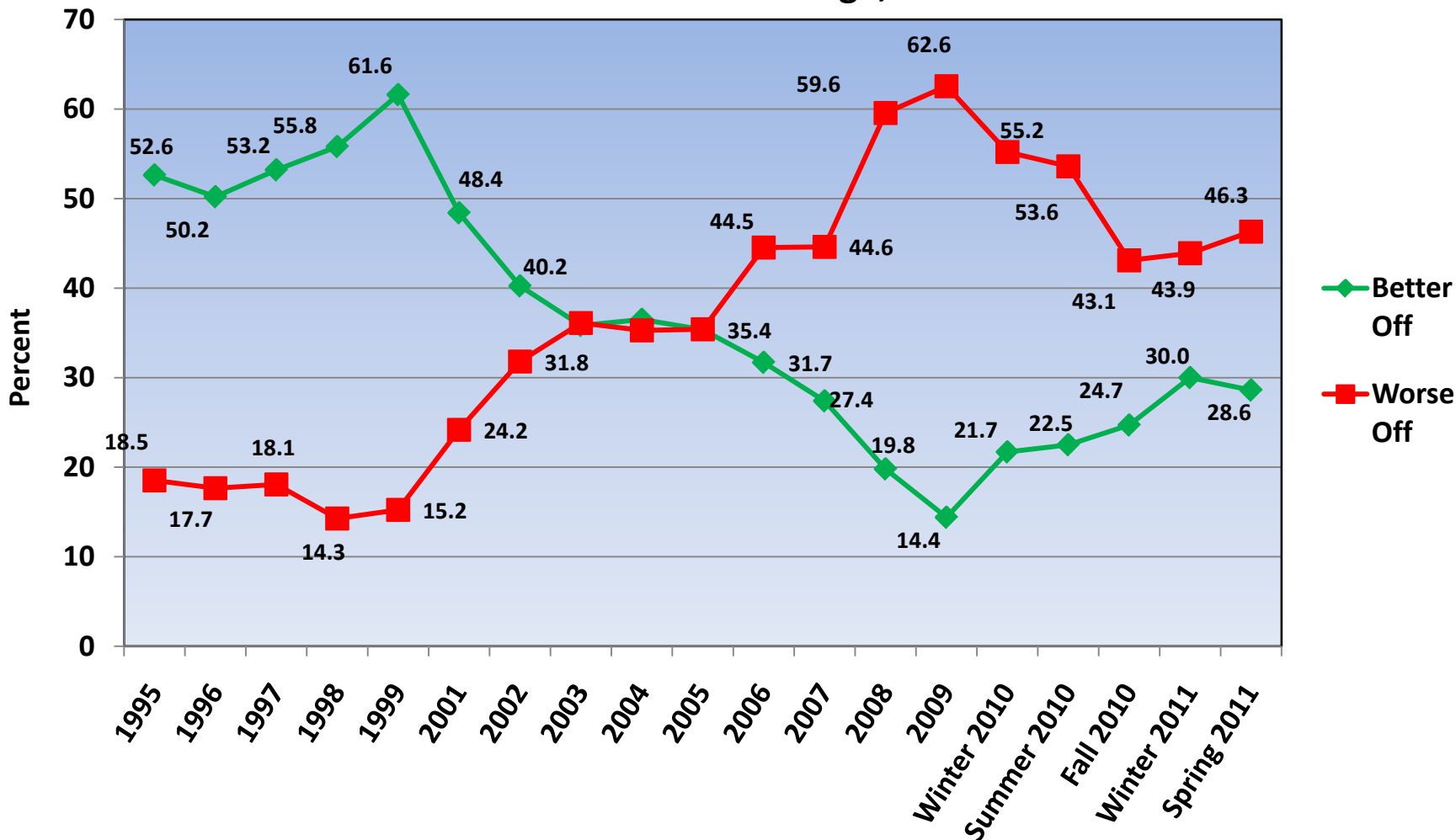
In Winter 2011, when asked whether they were better off or worse off than one year before, Michigan residents gave the highest ratings since 2006.

But these ratings also fell back slightly in Spring 2011.

Michigan Residents' Beliefs About Whether They Are Better Off Than One Year Ago, Spring 2011



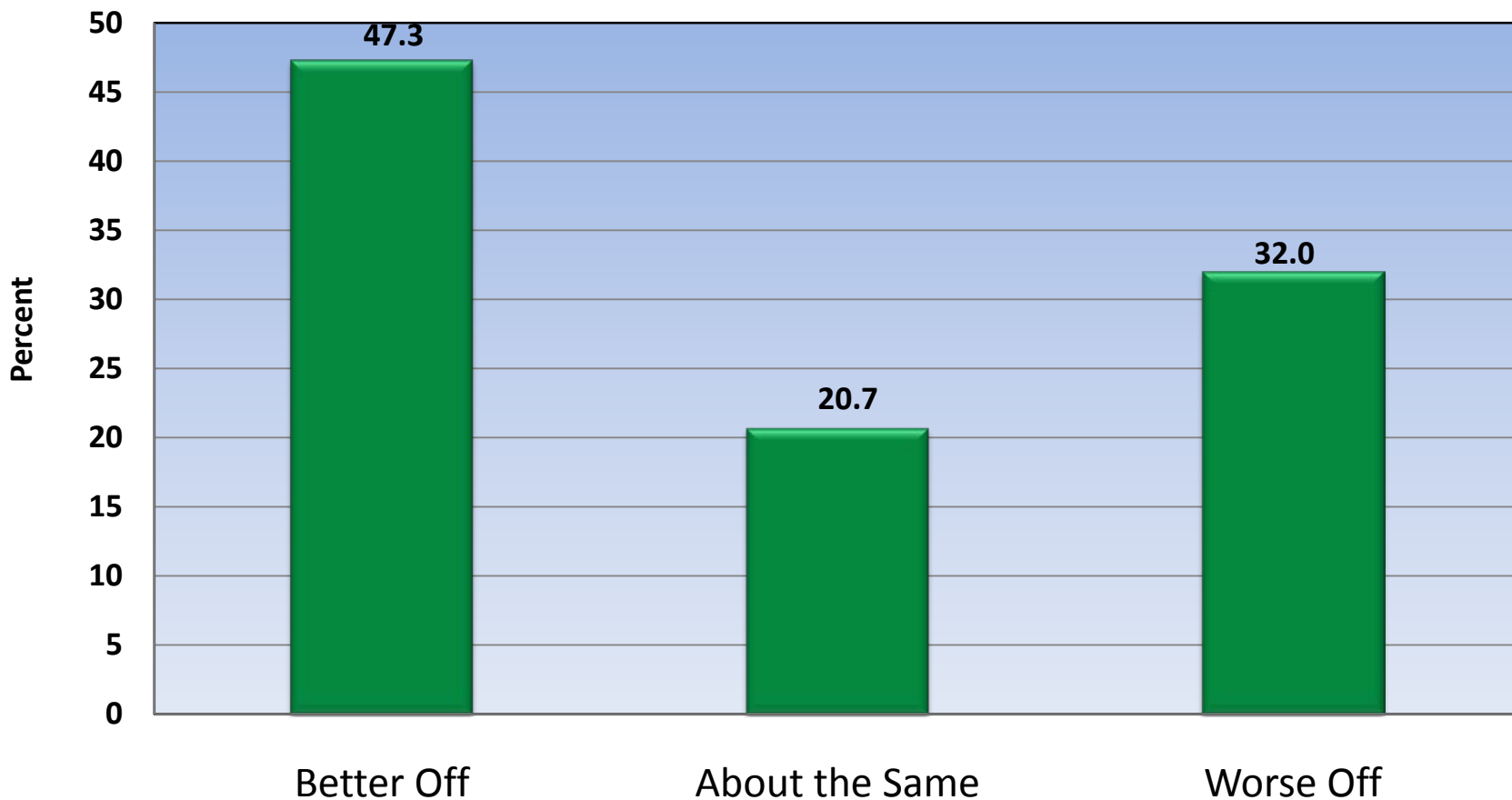
Michigan Residents' Beliefs About Whether They Are Better Off or Worse Off Than One Year Ago, 1995-2011



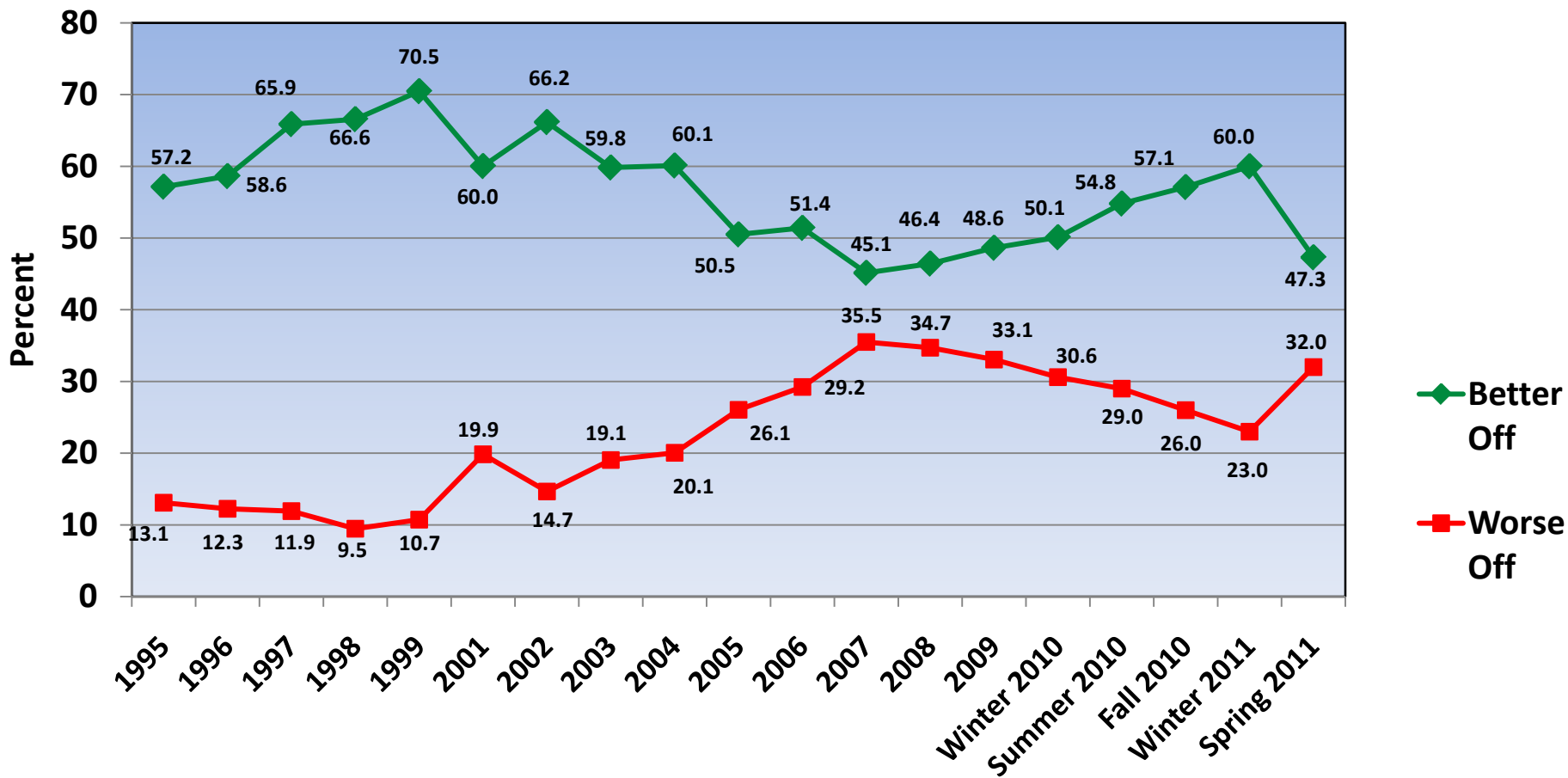
In Winter 2011, when asked whether they expect to be better off or worse off in one year, Michigan residents gave the highest ratings since 2004.

But these ratings worsened substantially in Spring 2011.

Michigan Residents' Beliefs About Whether They Will Be Better Off One Year From Now, Spring 2011



Michigan Residents' Beliefs About Whether They Will Be Better Off One Year From Now, 1995-2011



Regional Attitudes

Views of Residents from Different Regions in Michigan

	<u>State of Michigan</u>	<u>City of Detroit</u>	<u>Wayne, Oakland, Macomb</u>	<u>SEMCOG Region^a</u>	<u>Grand Rapids Area^b</u>	<u>Lansing Area^c</u>	<u>Upper Peninsula</u>
Obama “Excellent” or “Good”	44.5%	67.0%	54.3%	53.0%	29.8%	62.0%	30.2%
Snyder “Excellent” or “Good”	31.5%	29.0%	39.1%	38.7%	31.2%	22.0%	32.4%
Worse Off Than One Year Ago	46.3%	41.9%	47.1%	44.4%	25.2%	36.2%	72.2%

^a Livingston, Macomb, Monroe, Oakland, St. Clair, Washtenaw, and Wayne Counties

^b Allegan, Barry, Ionia, Kent, Montcalm, Muskegon, Newaygo, and Ottawa Counties

^c Clinton, Eaton, and Ingham Counties

Attitudes by Race and Gender

Views of Michigan Residents By Race and Sex

	<u>State of Michigan</u>	<u>Women</u>	<u>Men</u>	<u>Whites</u>	<u>Blacks</u>
Obama					
“Excellent” or “Good”	44.5%	46.8%	42.4%	41.5%	88.7%
Snyder					
“Excellent” or “Good”	31.5%	32.9%	30.1%	31.8%	44.2%
Worse Off Than One Year Ago	46.3%	44.9%	47.7%	45.0%	41.4%

Attitudes by Political Party

Views of Michigan Residents By Political Party

	<u>State of Michigan</u>	<u>Republican</u>	<u>Independent</u>	<u>Democrat</u>	<u>Other</u>
Obama "Excellent" or "Good"	44.5%	8.3%	53.1%	73.3%	12.2%
Snyder "Excellent" or "Good"	31.5%	65.9%	27.1%	14.6%	41.0%
Worse Off Than One Year Ago	46.3%	44.4%	52.0%	48.0%	36.5%

THANK YOU.