

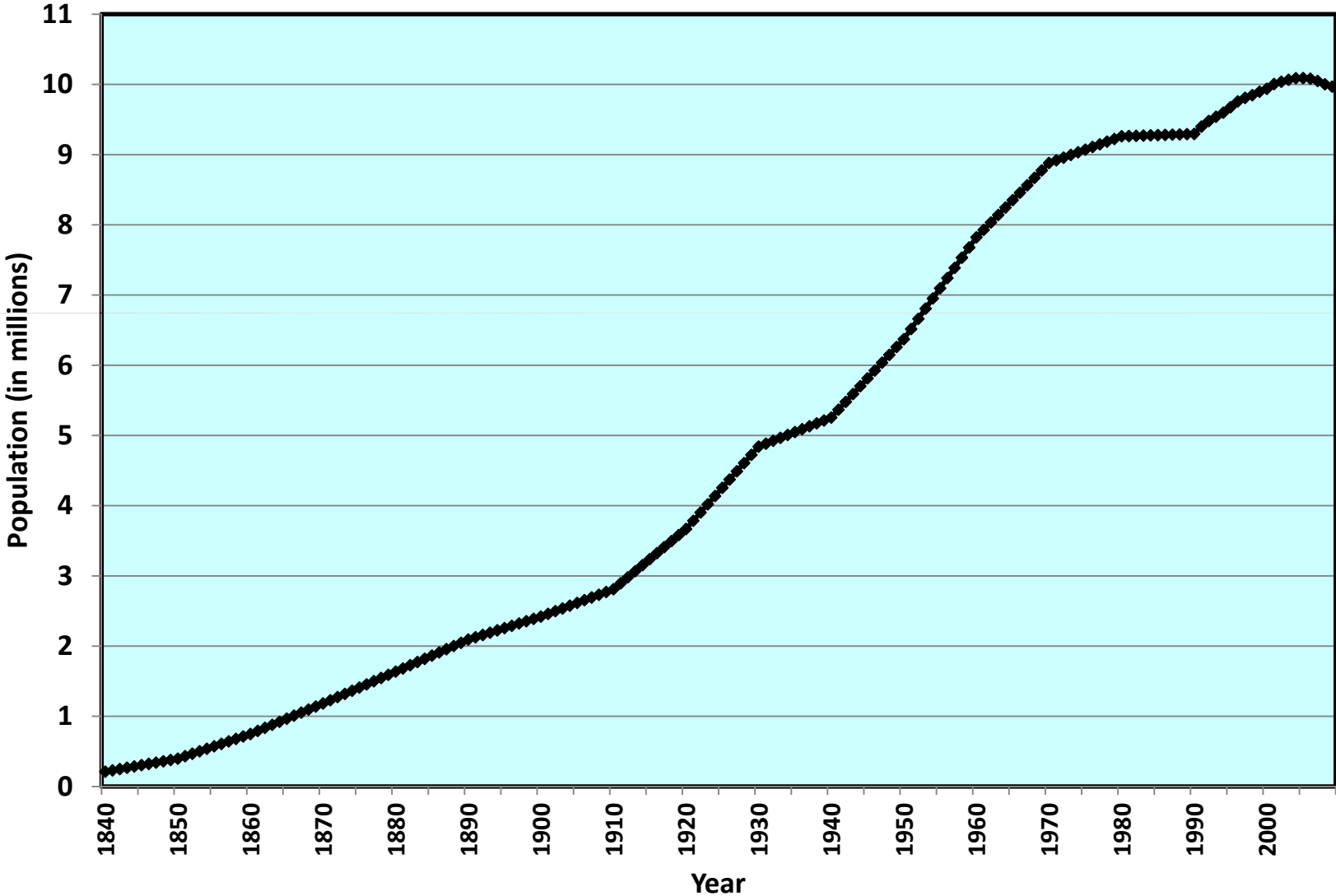
***Michigan's Past, Present, and Future:
Demographics, Economics, Politics***

**Presented to:
IPPSR Forum
January 22, 2014**

**Charles L. Ballard
Department of Economics
Michigan State University
East Lansing, MI
ballard@msu.edu**

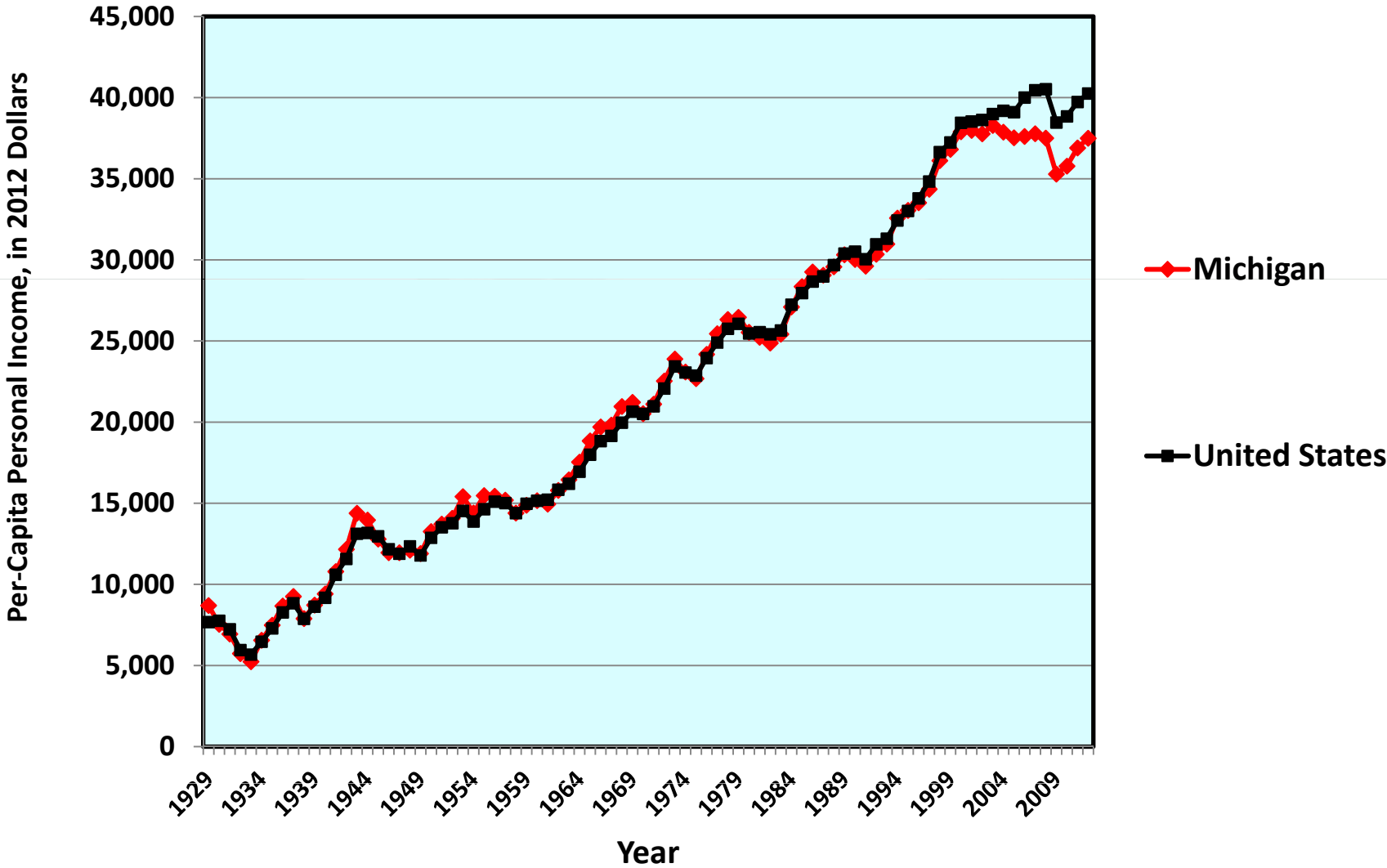
**Where there is
economic opportunity,
people will follow.**

Population in Michigan, 1840-2009

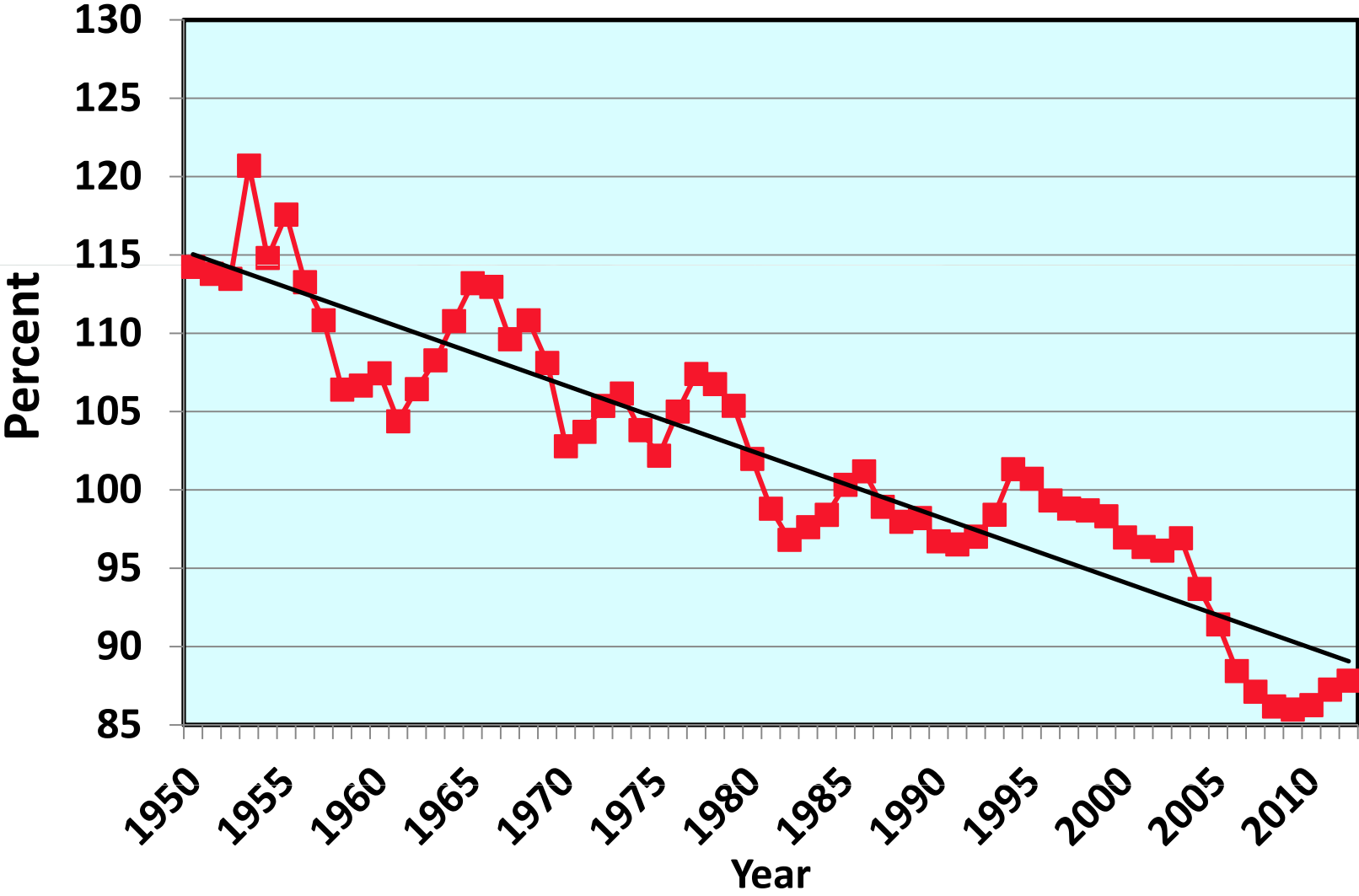


The slowing of population growth in Michigan began at a time when the economy was still growing, but at a slower pace (both in absolute terms, and relative to the national average).

Inflation-Adjusted Per-Capita Personal Income, In Michigan and the United States, 1929-2012

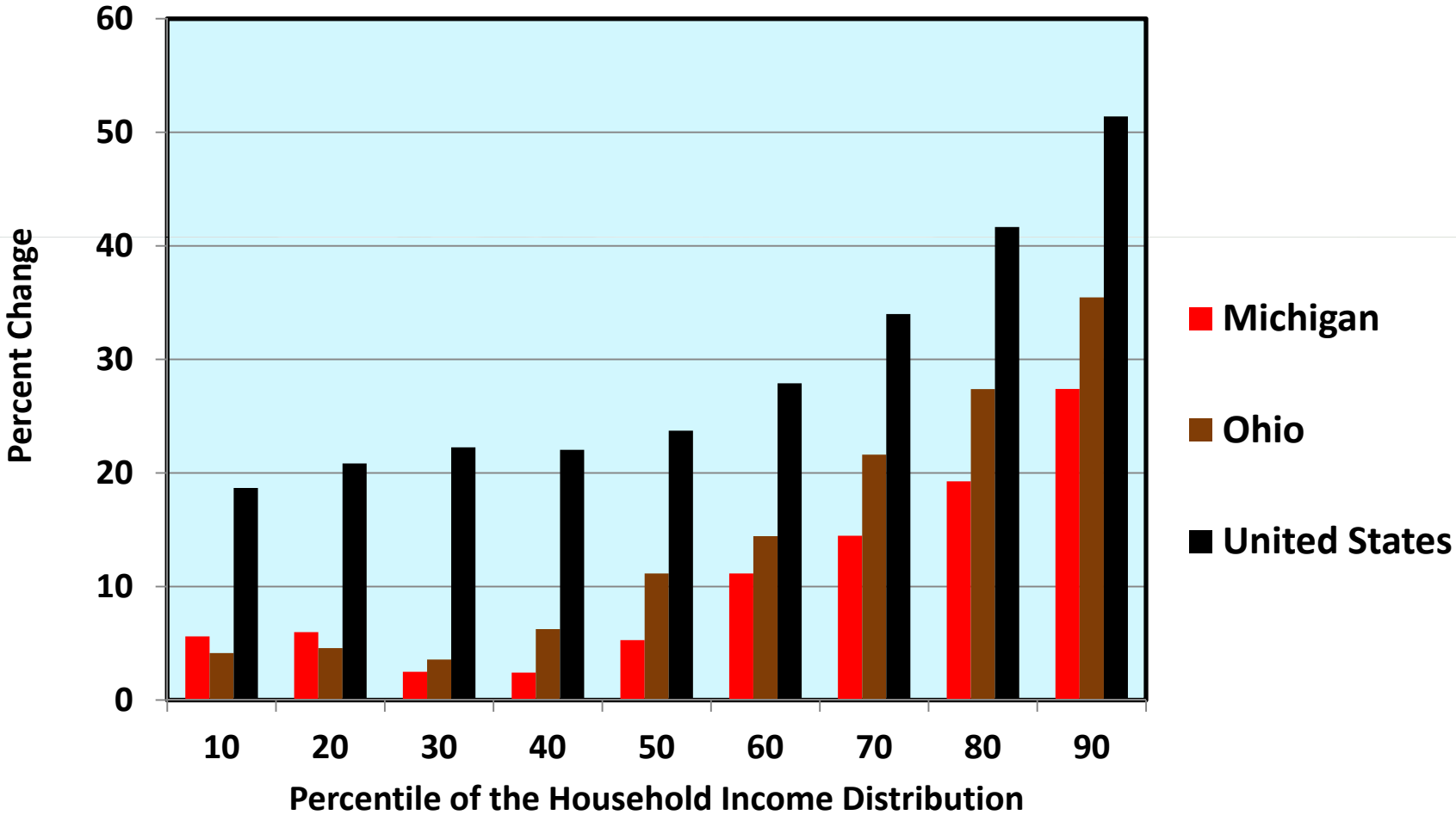


Per-Capita Personal Income: Michigan as a Percent of the U.S. Average, 1950-2012



**Also, this period of slowing
OVERALL economic growth
was accompanied by a
major increase in income
inequality.**

**Percent Change in Inflation-Adjusted Income from 1976-78 to 2006-08,
For Households at Selected Points in the Income Distribution,
For Michigan, Ohio, and the United States**



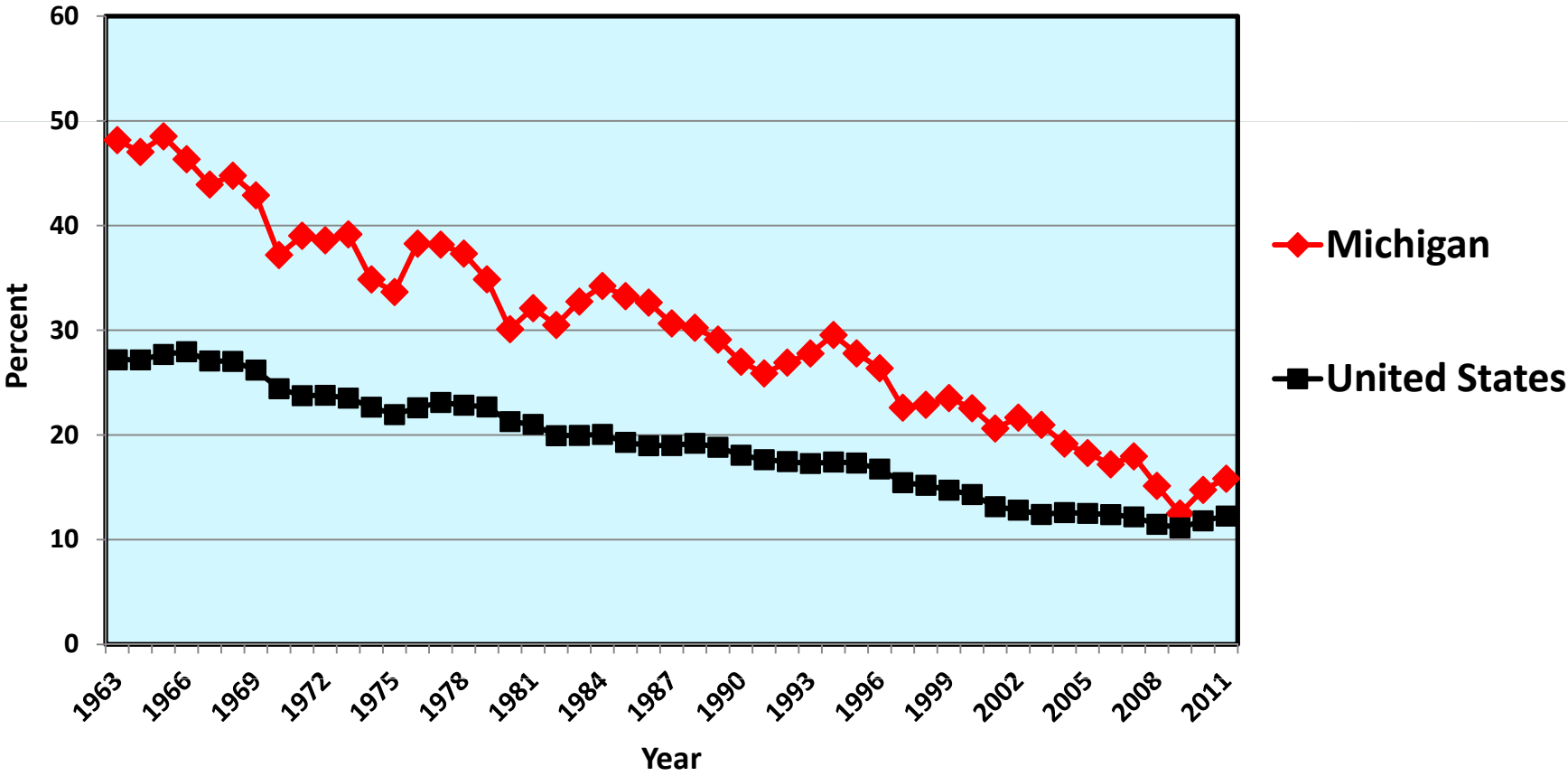
This relative decline has many sources. Here are two of the biggest:

1. Relative decline of manufacturing.

2. Increase in earnings for those with the highest levels of education.

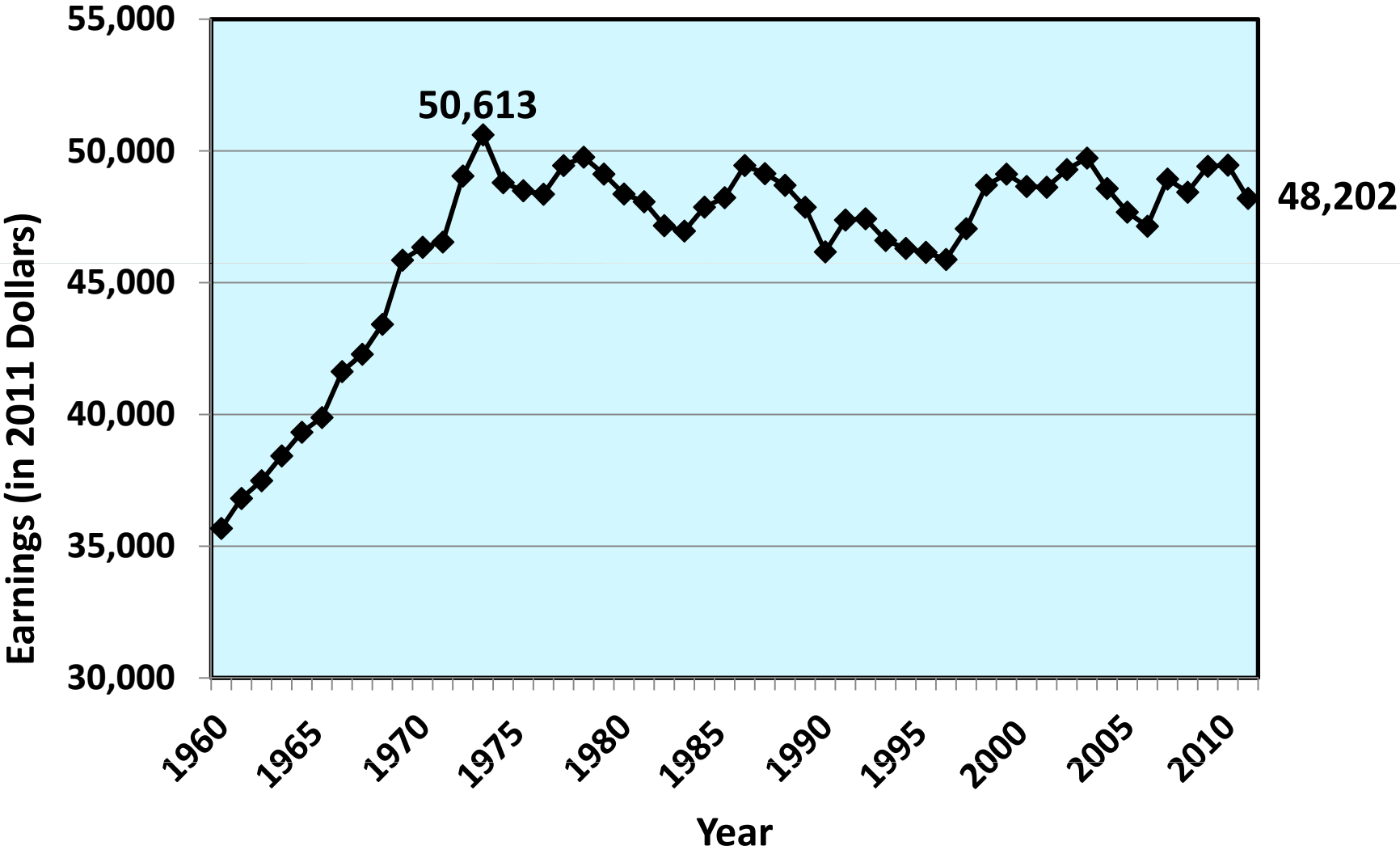
Manufacturing's Share of the Economy Has Shrunk Dramatically

Manufacturing as a Percent of Gross Product, In Michigan and the United States, 1963-2011

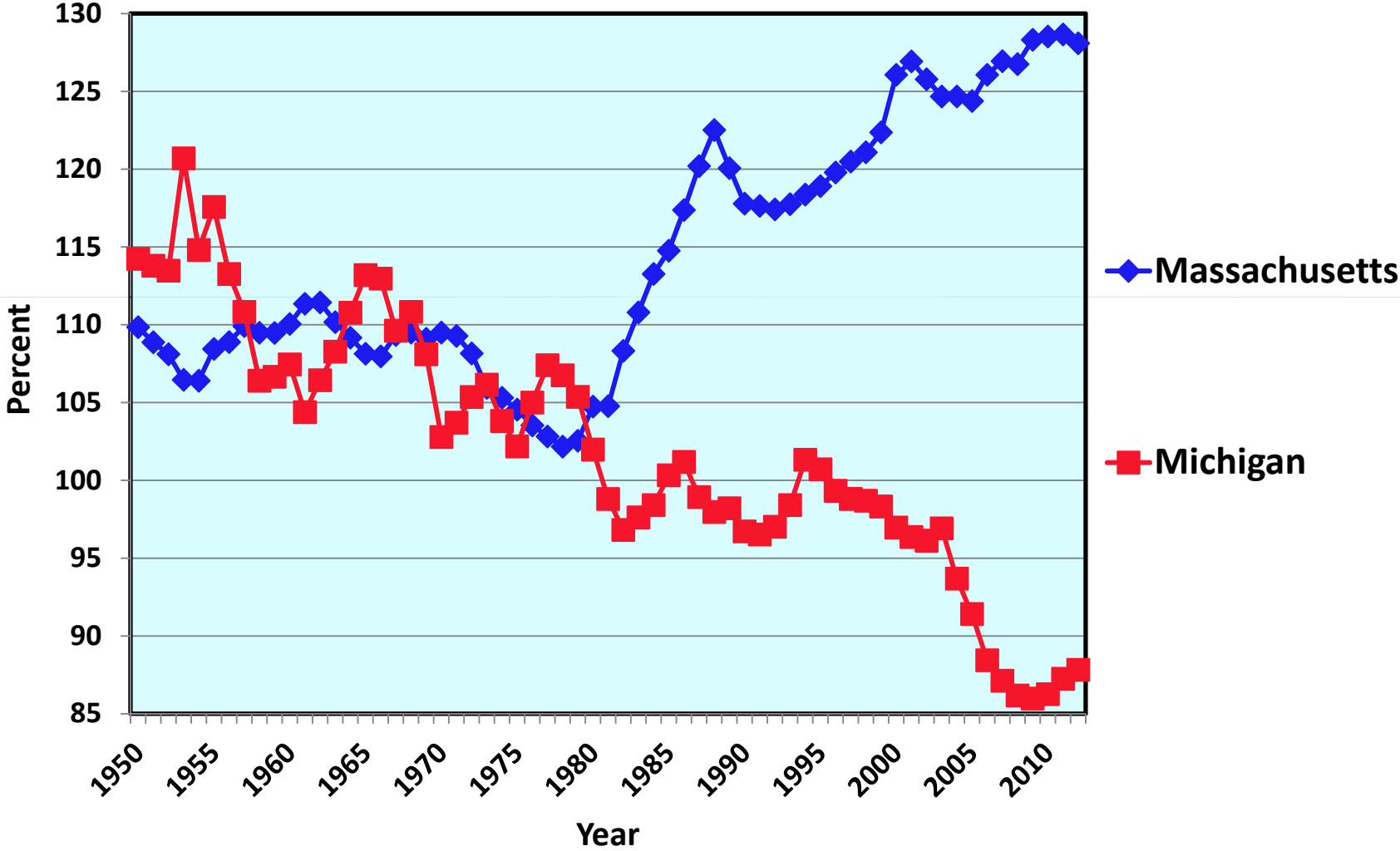


American men who have not been to college have fared especially poorly in the last 40 years.

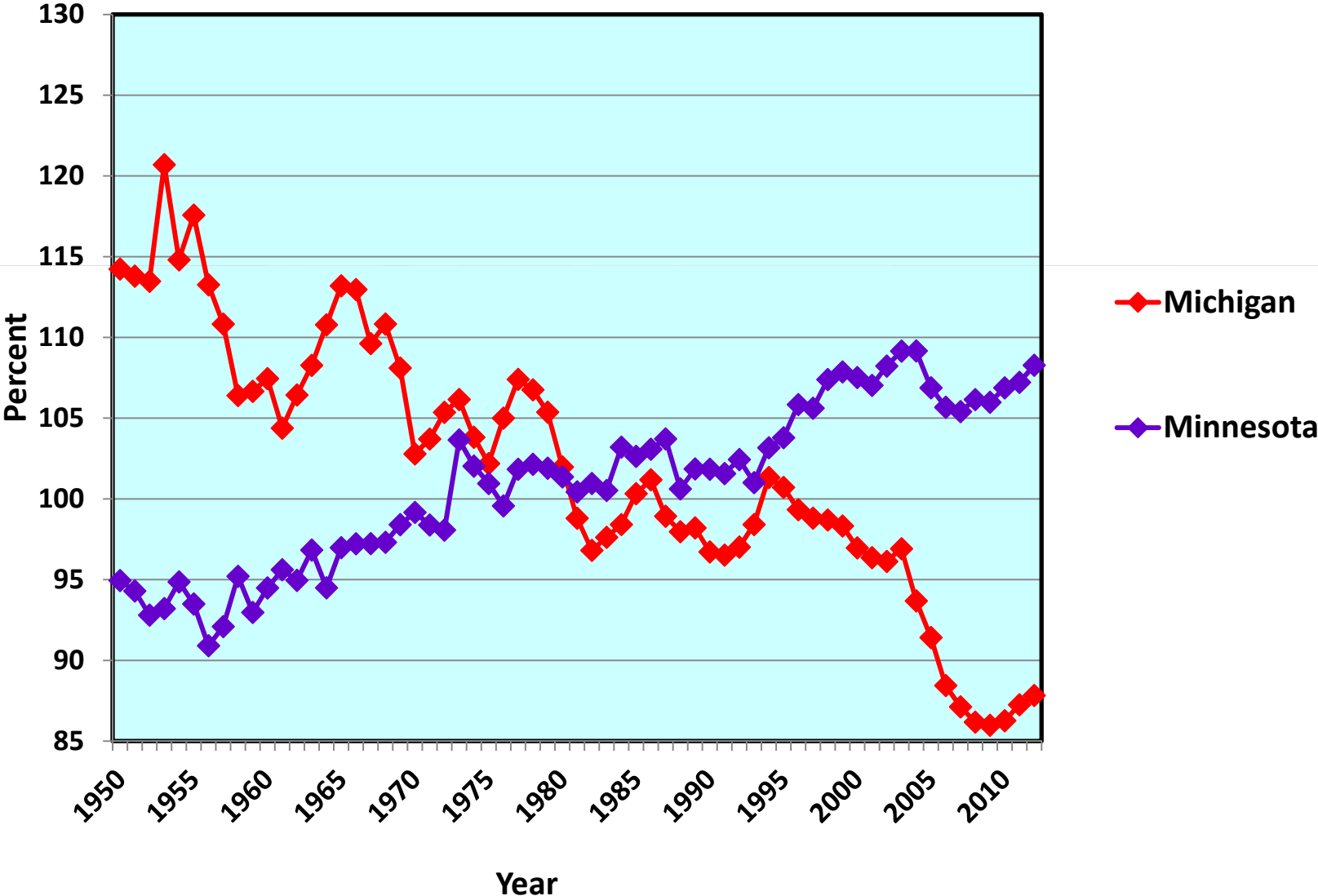
Inflation-Adjusted Median Earnings for Men Working Full-Time Year-Round in the United States, 1960-2011



Per-Capita Personal Income in Massachusetts and Michigan, As a Percent of the U.S. Average, 1950-2012



Per-Capita Personal Income in Minnesota and Michigan, As a Percent of the U.S. Average, 1950-2012

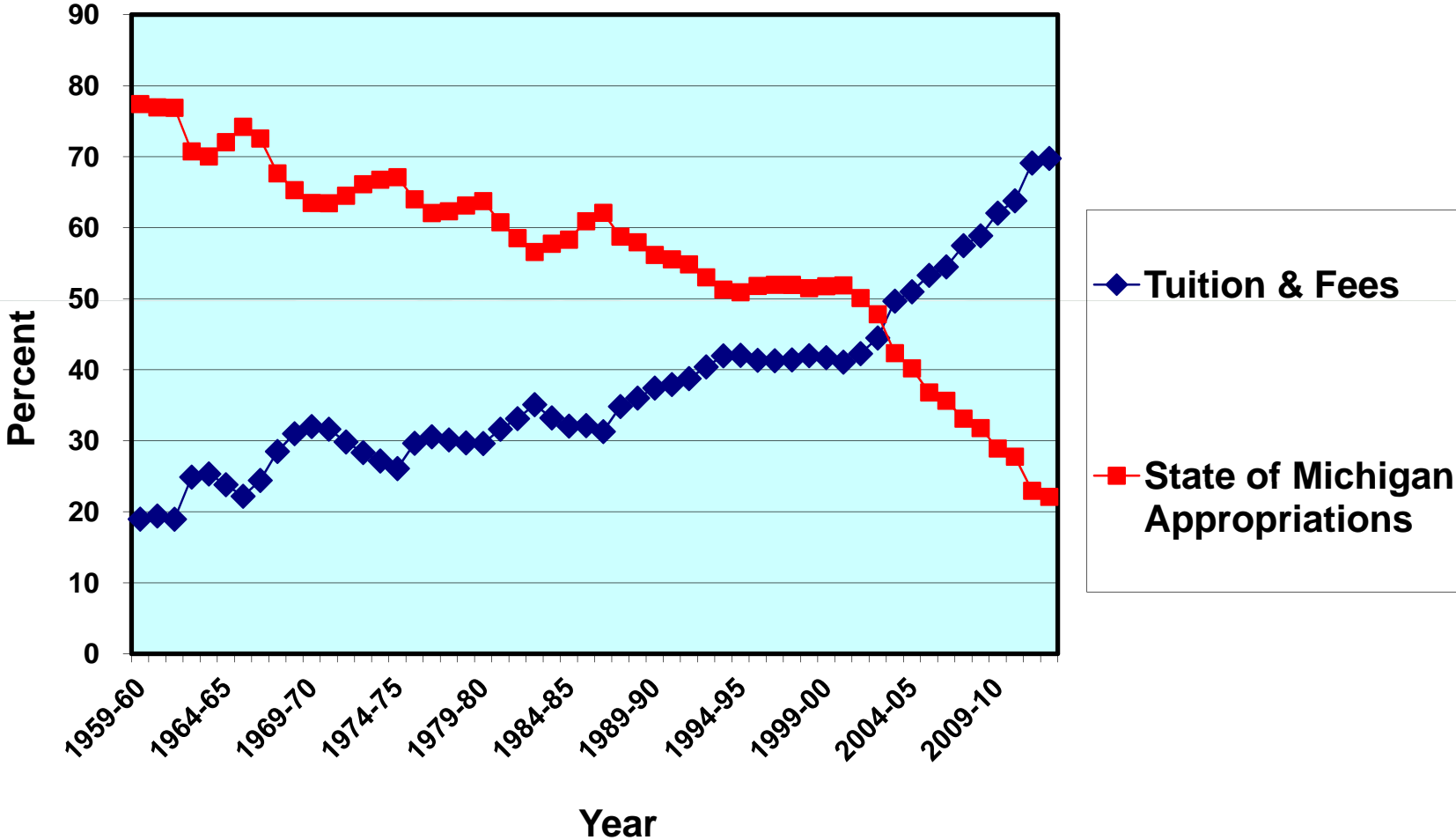


This slide is brought to you by the letter “M”:

<u>State</u>	<u>College- Attainment Rank 2011</u>	<u>Income Rank 2011</u>
Massachusetts	1	2
Minnesota	10	11
Michigan	35	36
Mississippi	48	50

At a time when education is so crucial to our future, Michigan has pursued a policy of systematic disinvestment in education.

Sources of Funds for Michigan State University,
1959-60 to 2012-13



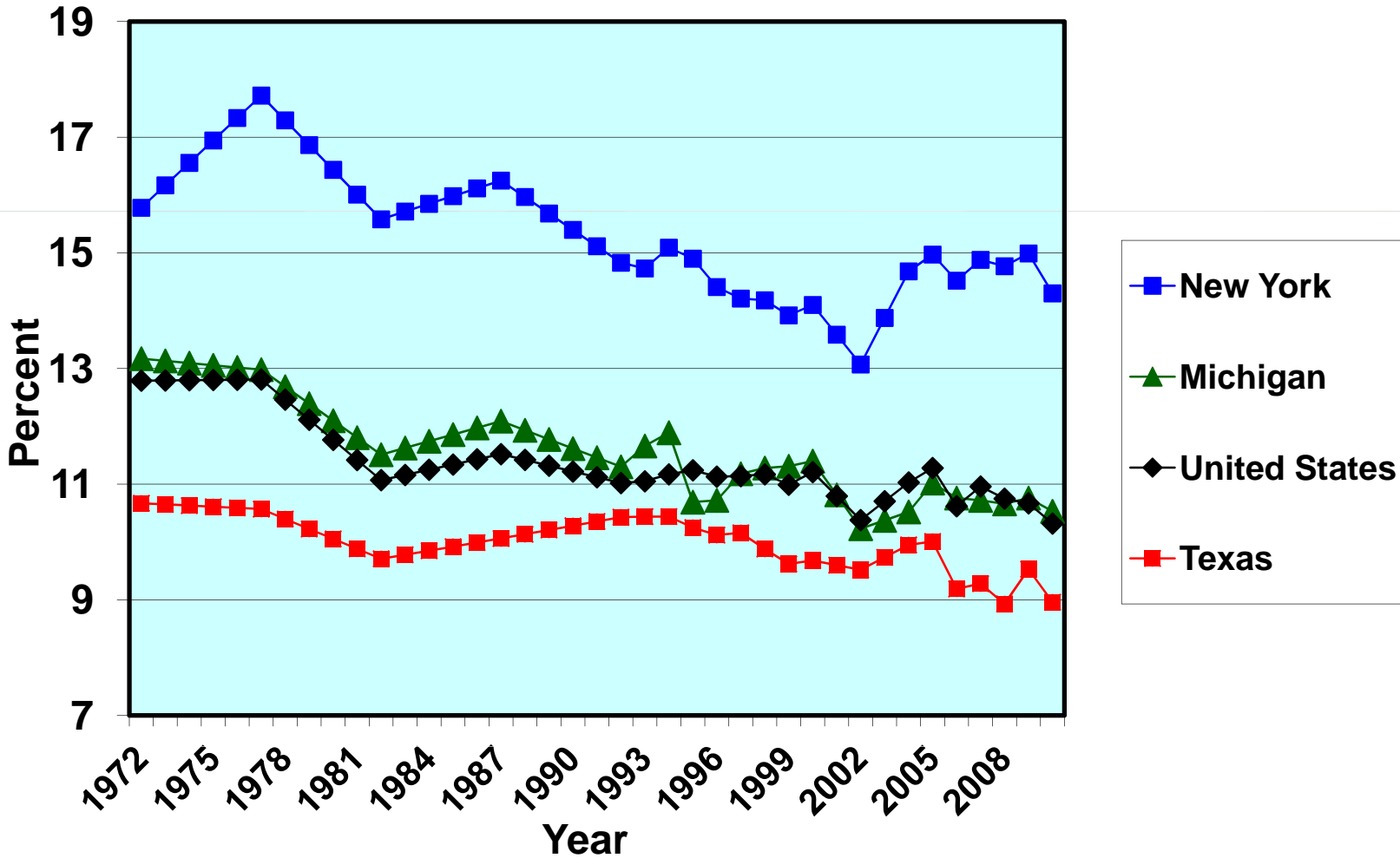
In order to be equivalent to the real budget reductions of 2003-2011, we would have to cease state support for:

**Central Michigan University,
Eastern Michigan University,
Ferris State University,
Grand Valley State University,
Lake Superior State University,
Michigan Technological University,
Northern Michigan University,
Oakland University,
Saginaw Valley State University,
University of Michigan - Dearborn,
University of Michigan - Flint, and
Western Michigan University.**

One big reason for the decline in higher-education funding is the long-term decrease in tax revenue.

Tax Effort Has Reduced Substantially

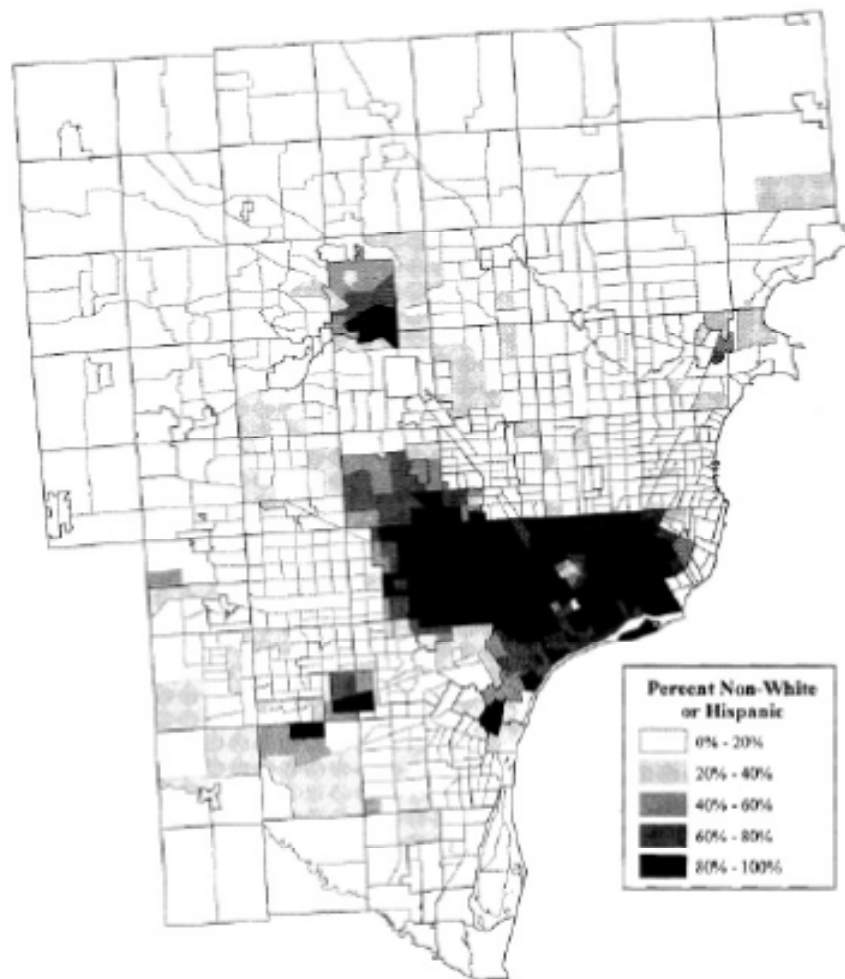
State and Local Taxes as Percent of Personal Income, 1972-2010



**In my view, the current clamor
for a tax cut is misplaced.**

The Detroit metropolitan area is more racially segregated than any other major area in the United States.

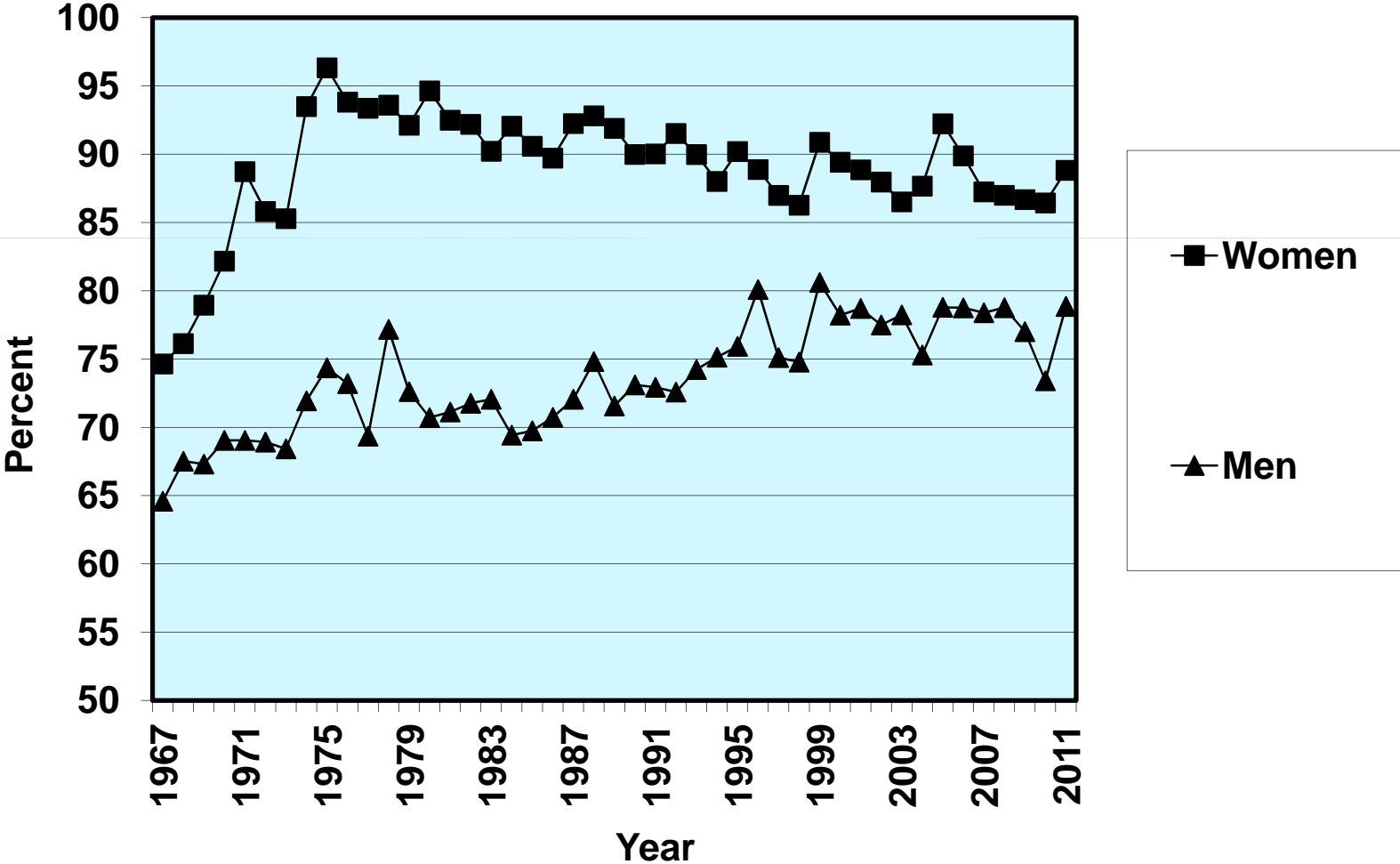
Many of the problems of the city and the metropolitan area stem from the lack of a regional focus.

FIGURE 3.22**Minority Population of Michigan Census Tracts in Detroit Tri-County Area, 2000**

SOURCE: U.S. Census Bureau, Census 2000, Summary File 1, Table P4. Michigan Center for Geographic Information.

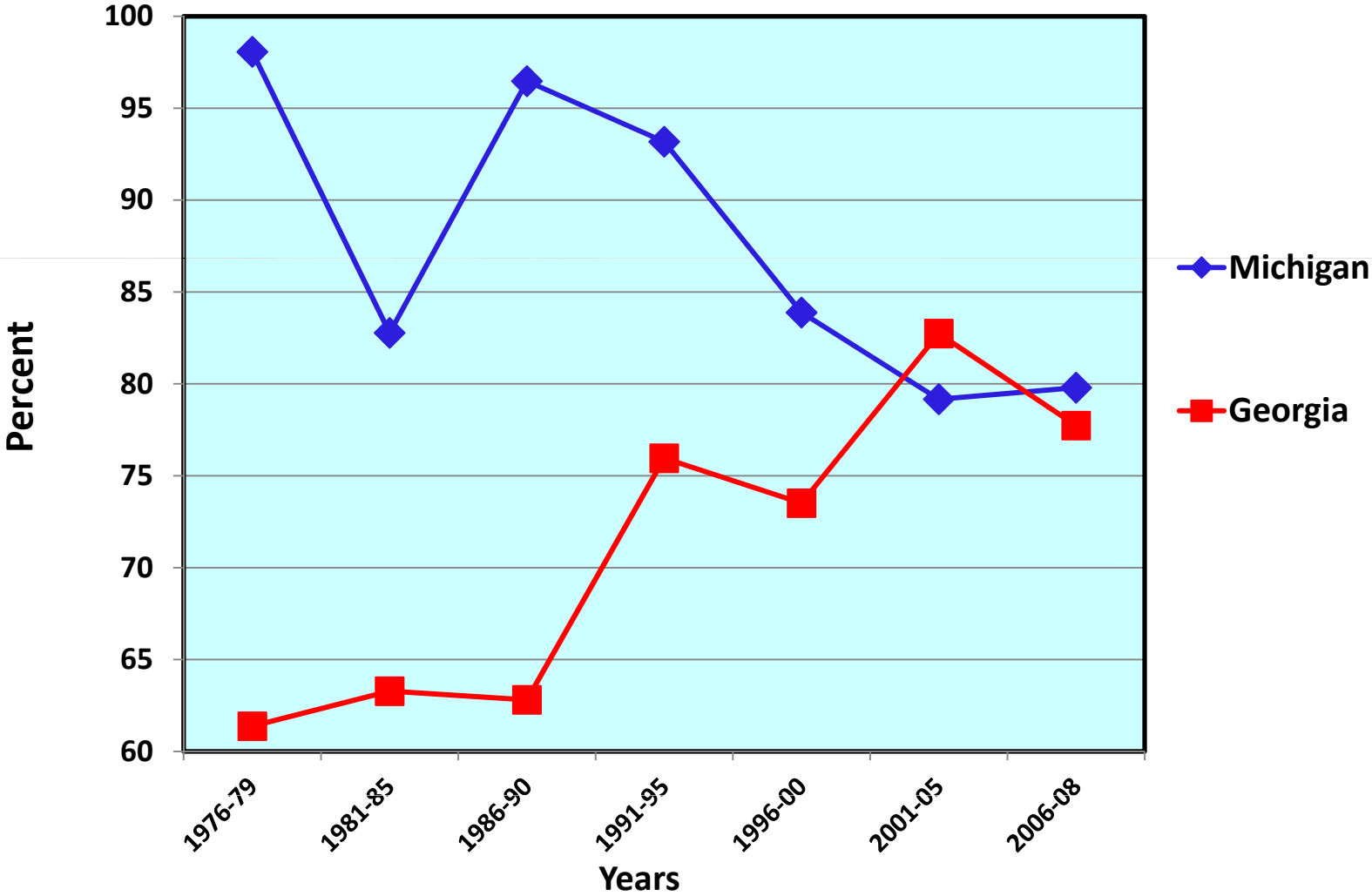
For the U.S. as a whole, the earnings gap between black and white men has decreased very slightly in the last 35 years, but the gap for women has increased.

Median Labor-Market Earnings for Blacks, As Percent of Median Earnings for Whites, For Full-Time Year-Round Workers In the United States, 1967-2011



In Michigan, African Americans have actually lost ground relative to whites.

Median Earnings for Black Men, As Percent of Median Earnings for White Men, For Michigan and Georgia, 1976-2008



Michigan, My Michigan

**A song to thee, fair State of mine,
Michigan, my Michigan.**

**But greater song than this is thine,
Michigan, my Michigan.**

**The whisper of the forest tree,
The thunder of the inland sea,
Unite in one grand symphony
Of Michigan, my Michigan.**