

# ***Michigan Policy Priorities for 2015***

**Presented to:  
IPPSR Public Policy Forum**

**January 21, 2015**

**Charles L. Ballard**

**Department of Economics**

**Michigan State University**

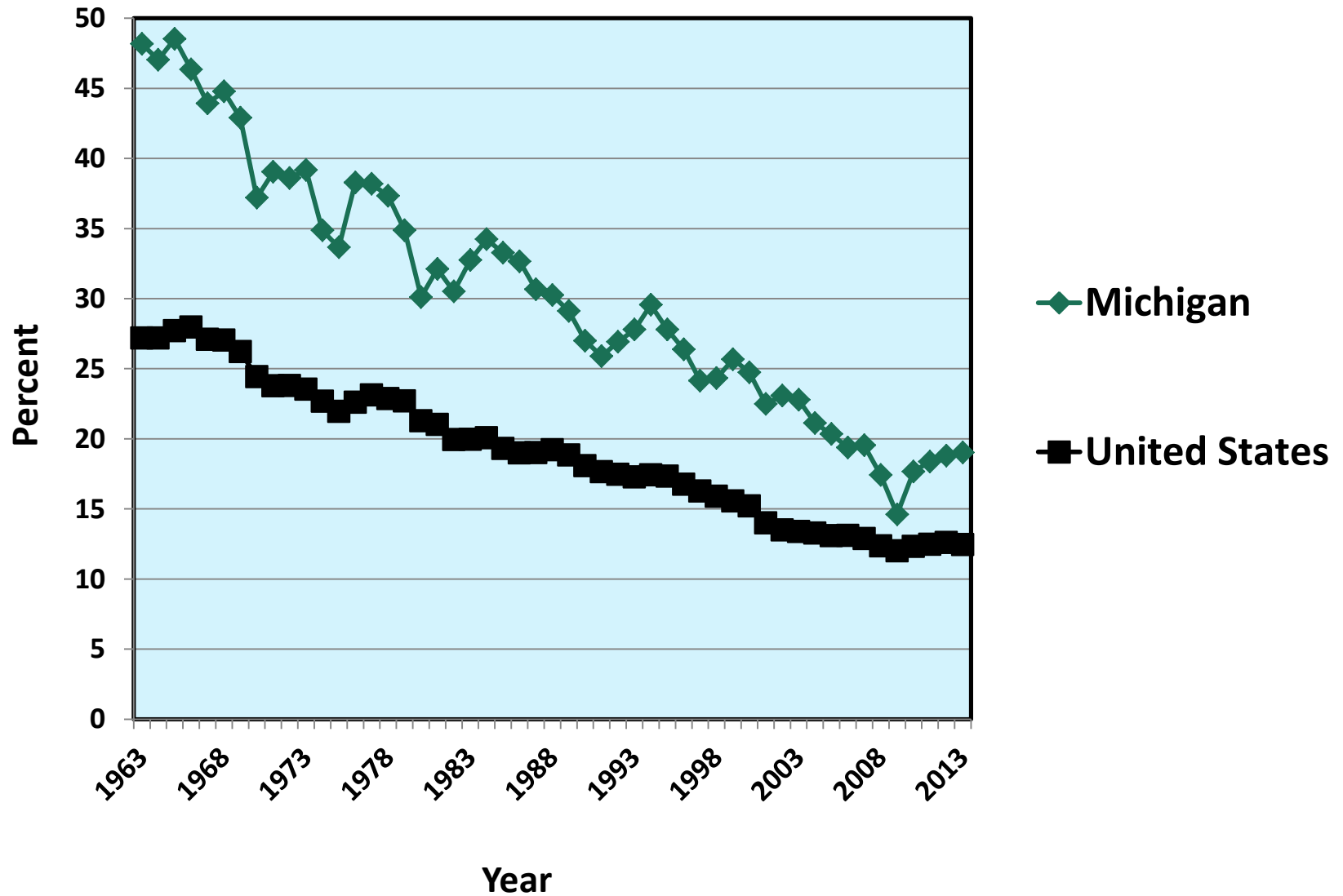
**East Lansing, MI**

**ballard@msu.edu**

Before we figure out  
where we want to go,  
we need to know  
where we are now,  
and how we got there.

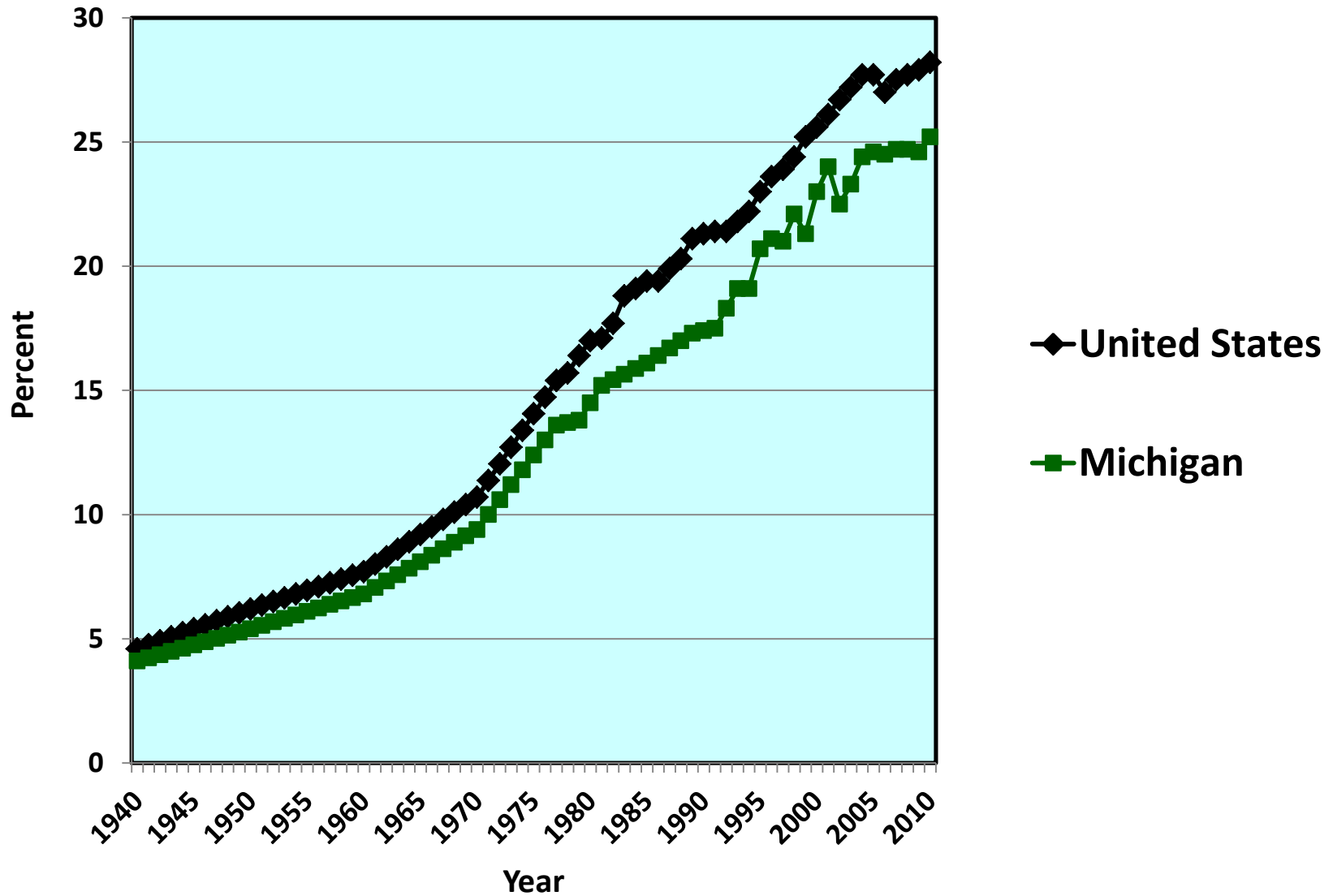
1. Manufacturing's share of the economy has shrunk dramatically.

## Manufacturing as a Percent of Gross Domestic Product, In Michigan and the United States, 1963-2013



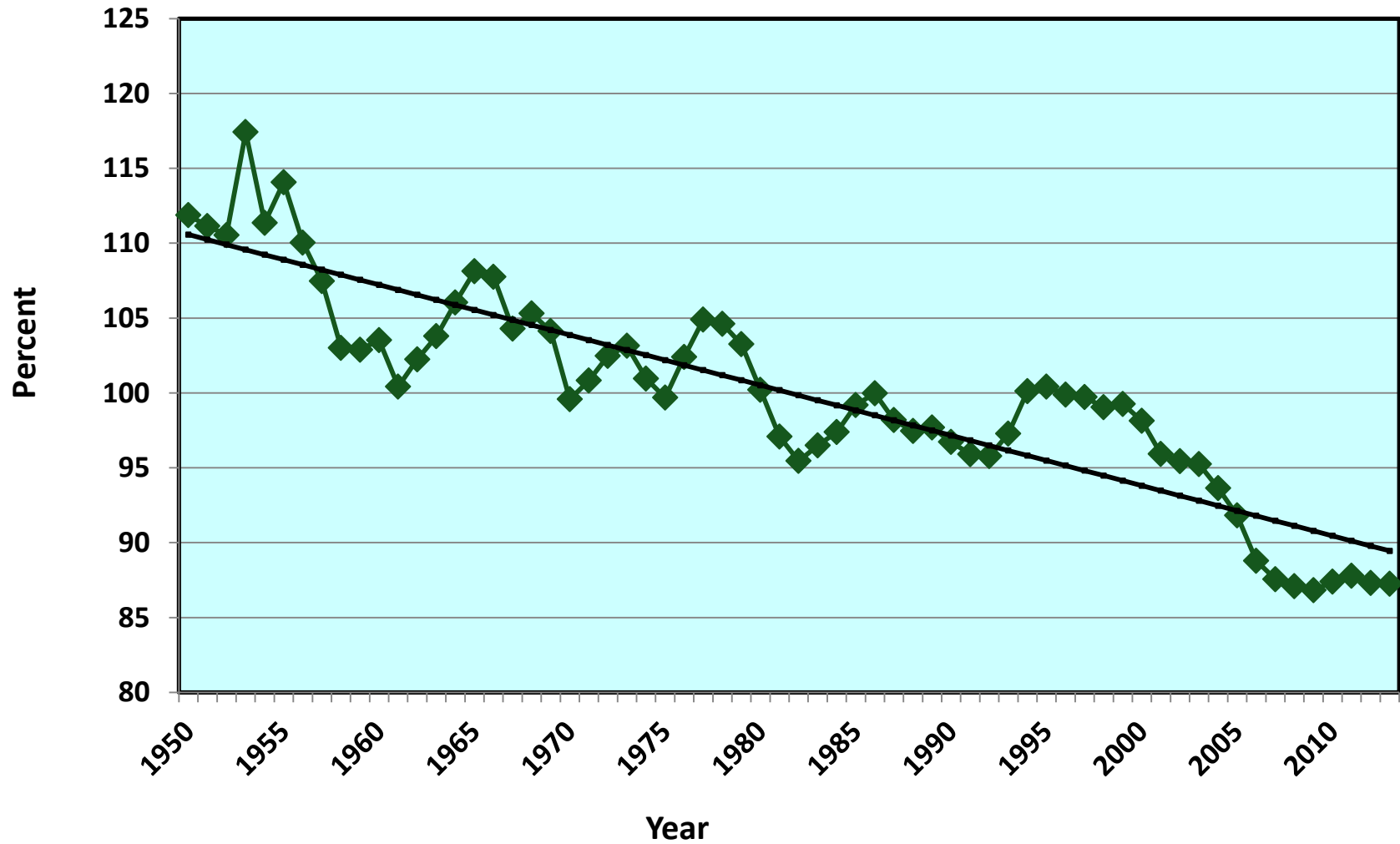
2. Educational attainment has increased in Michigan, but we remain below the national average.

## Percent of Population Aged 25 and Older With A Bachelor's Degree or More, Michigan and the United States, 1940-2010



3. Thus, incomes in Michigan have fallen relative to the national average.

## Per-Capita Personal Income: Michigan as a Percent of the United States, 1950-2013





Good News: Adjusting for inflation, per-capita income in Michigan is higher than it has ever been.

Not-so-Good News:

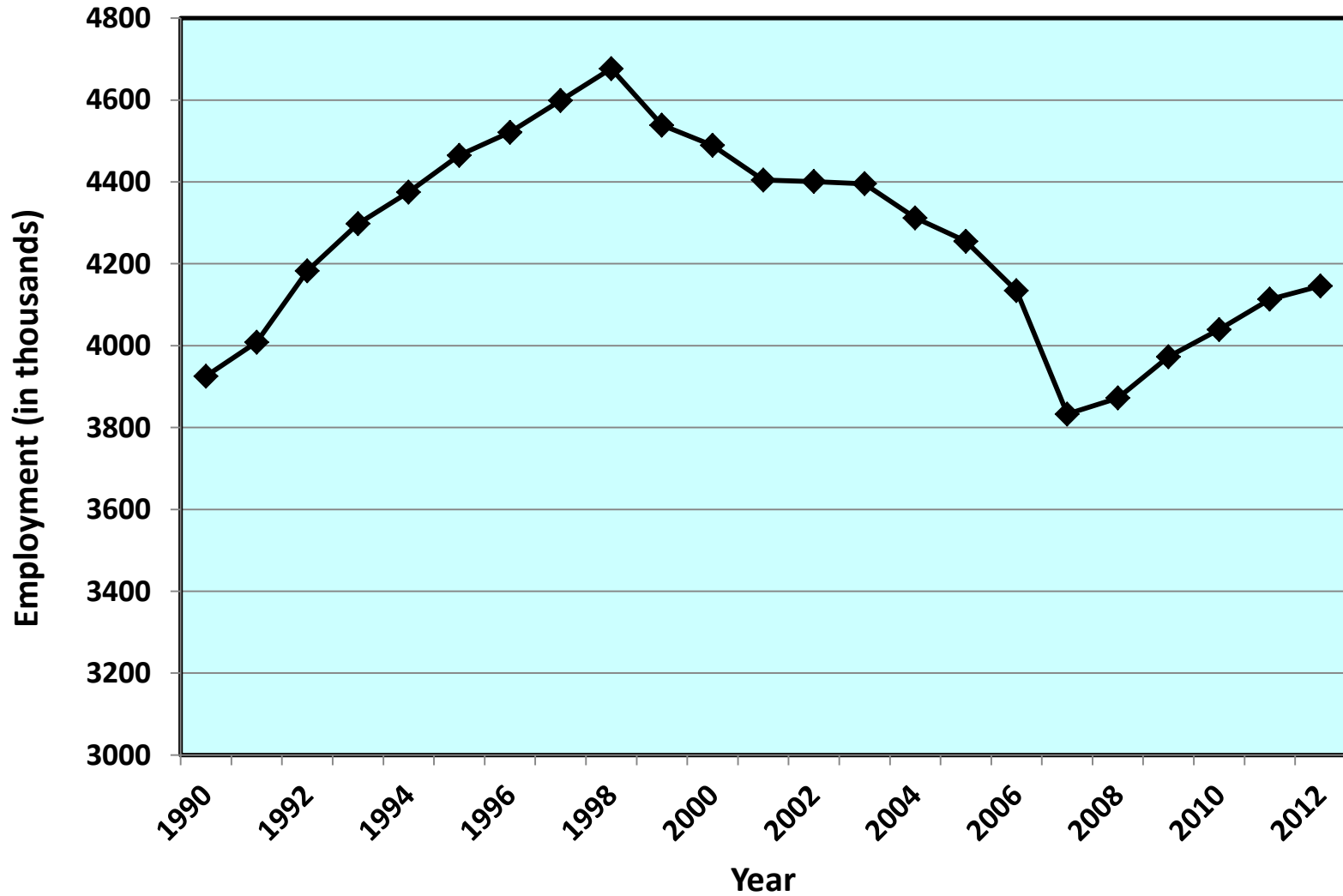
(1) We remain 12 to 13 percent below the U.S. average.

(2) The benefits of growth haven't reached everyone

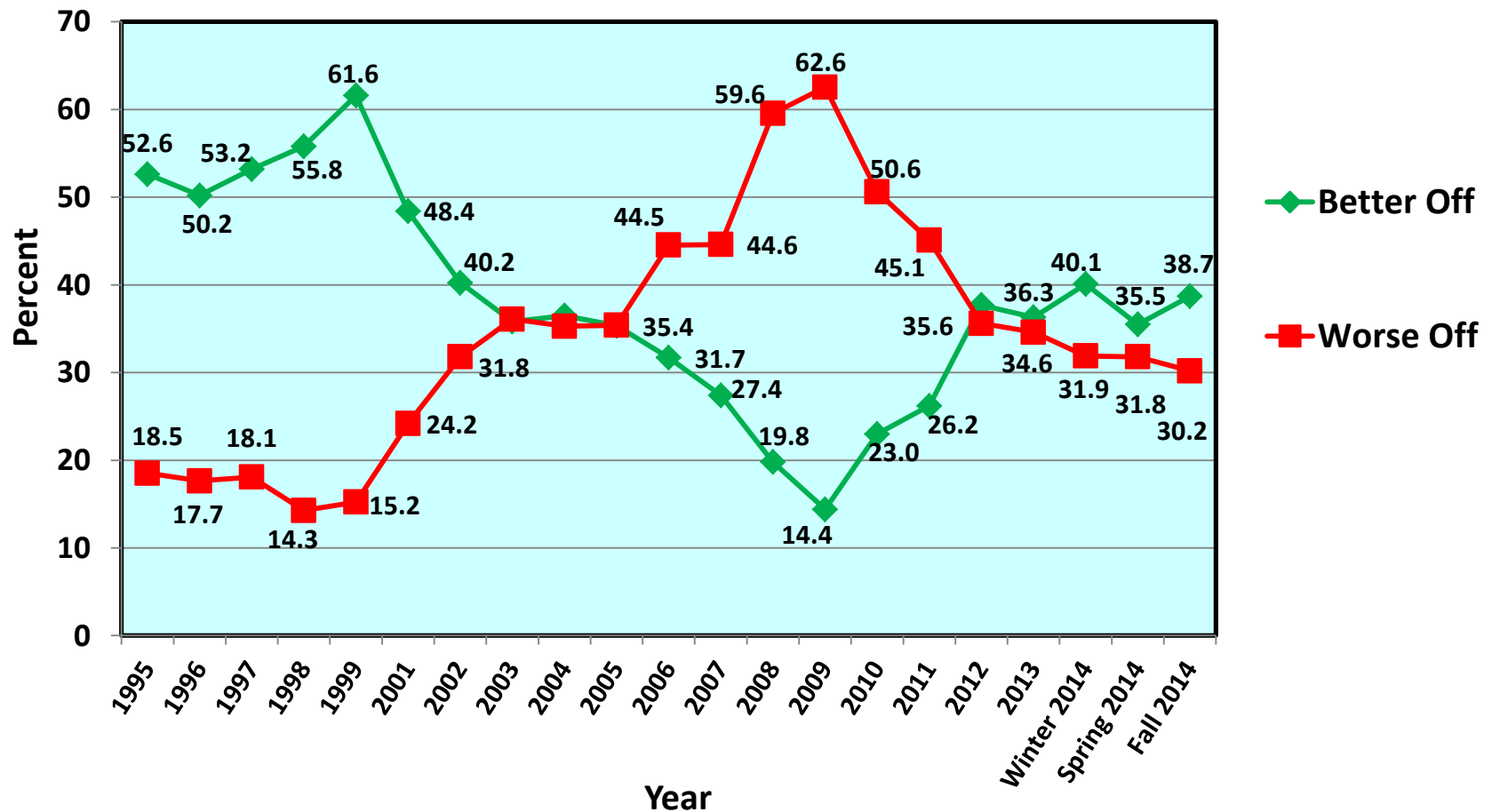
Good News: Employment in Michigan has been growing for nearly five years.

Not-so-good News: Still, we are more than half a million jobs below the all-time peak in 2000.

Michigan Employment, 1990-2014  
(data for September of each year)



## State of the State Survey: Michigan Residents' Beliefs About Whether They Are Better Off or Worse Off Than One Year Ago, 1995-2014



Now let's take a look  
at the policy pluses  
and minuses of recent  
years.

SUCCESS: The auto rescue  
/ auto bailout.

SUCCESS (although it's  
just a beginning): Detroit's  
bankruptcy.

**SUCCESS** (although it's just a beginning):  
Expansion of access to early-childhood education.

**SUCCESS:** Expansion of access to health insurance.

**SUCCESS: Elimination of the Michigan Business Tax (but I would have replaced more revenue).**

**SUCCESS: Internet taxation.**

**SUCCESS: Taxation of pension income.**



**FAILURE: Massive disinvestment in higher education.**

**FAILURE: Our roads are a disgrace.**

**FAILURE: The Moroun monopoly remains intact.**

# My top policy priorities:

1. Education!

2. Training!

3. Skill!

# More policy priorities:

1. Vote YES on May 5: We can't afford to let our roads crumble.

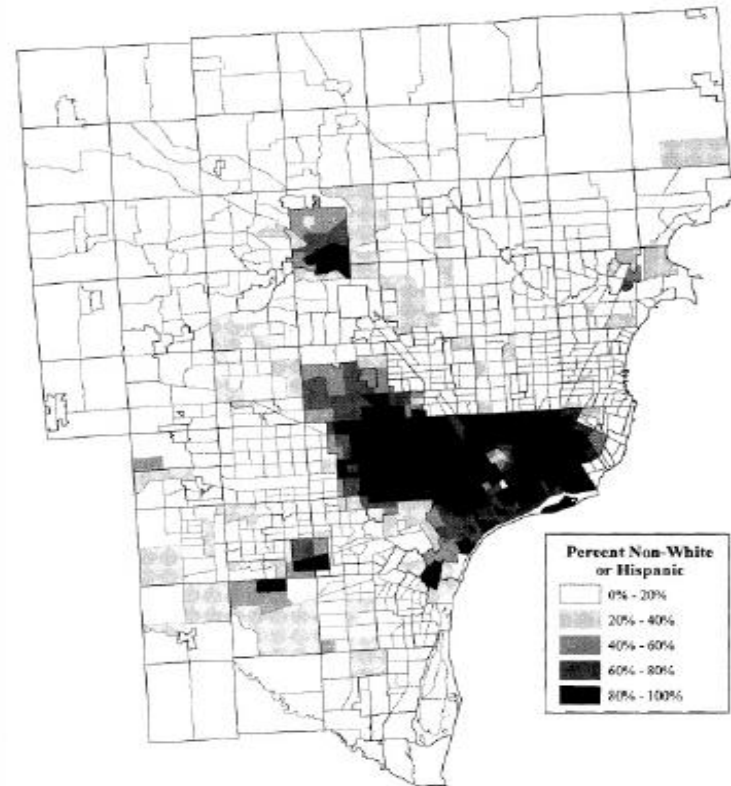
2. Build the new bridge!

3. DON'T CUT TAXES!

# Eight-Mile Road is the Berlin Wall of Michigan.

**FIGURE 3.22**

**Minority Population of Michigan Census Tracts in Detroit Tri-County Area, 2000**



SOURCE: U.S. Census Bureau, Census 2000, Summary File 1, Table P4. Michigan Center for Geographic Information.

It will take decades to tear down the wall, but at least we must try to knock out a few chunks every year.

# Michigan, My Michigan

A song to thee, fair State of mine,  
Michigan, my Michigan.

But greater song than this is thine,  
Michigan, my Michigan.

The whisper of the forest tree,  
The thunder of the inland sea,  
Unite in one grand symphony  
Of Michigan, my Michigan.